

PRINT  
OUT  
& KEEP

# HAZEL SKIRT PATTERN

Use these guides to get started today

---

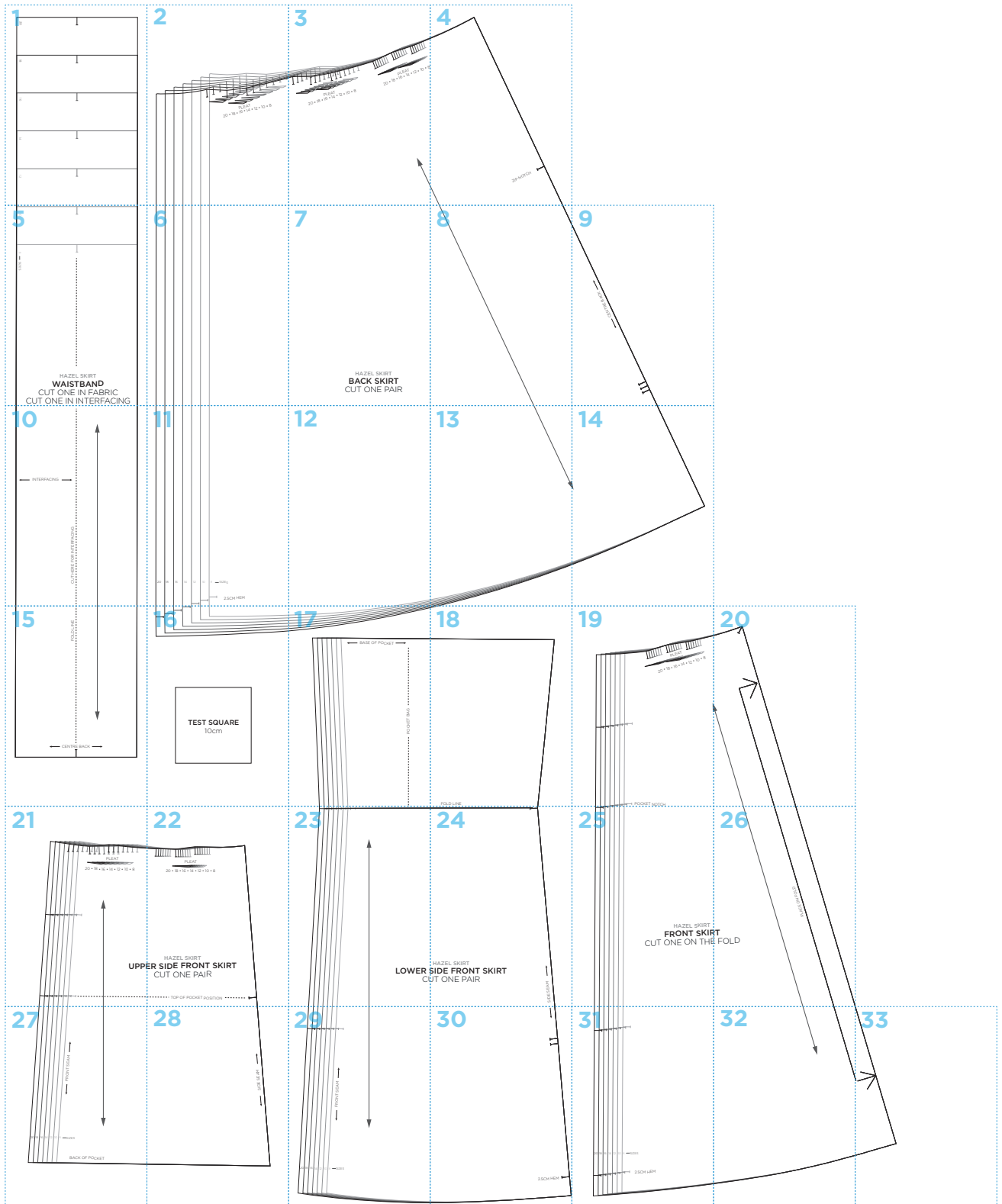
IN YOUR PRINT MENU, UNDER SIZE OPTIONS, BE SURE TO  
SELECT '**ACTUAL SIZE**', INSTEAD OF 'FIT TO PAGE'

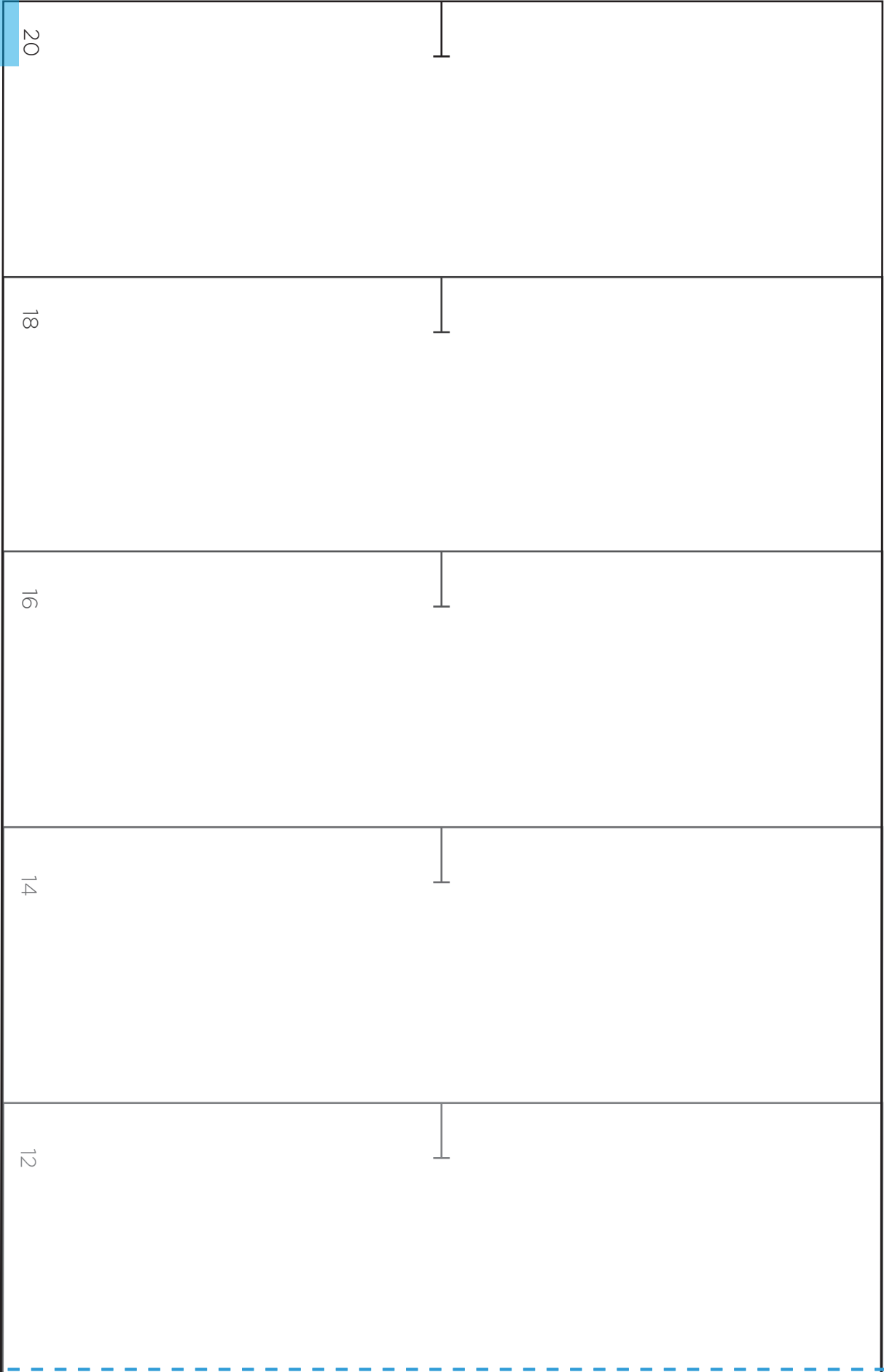
---

**Title:** Hazel Skirt  
**Designer:** Amanda Walker  
**Magazine page:** 25

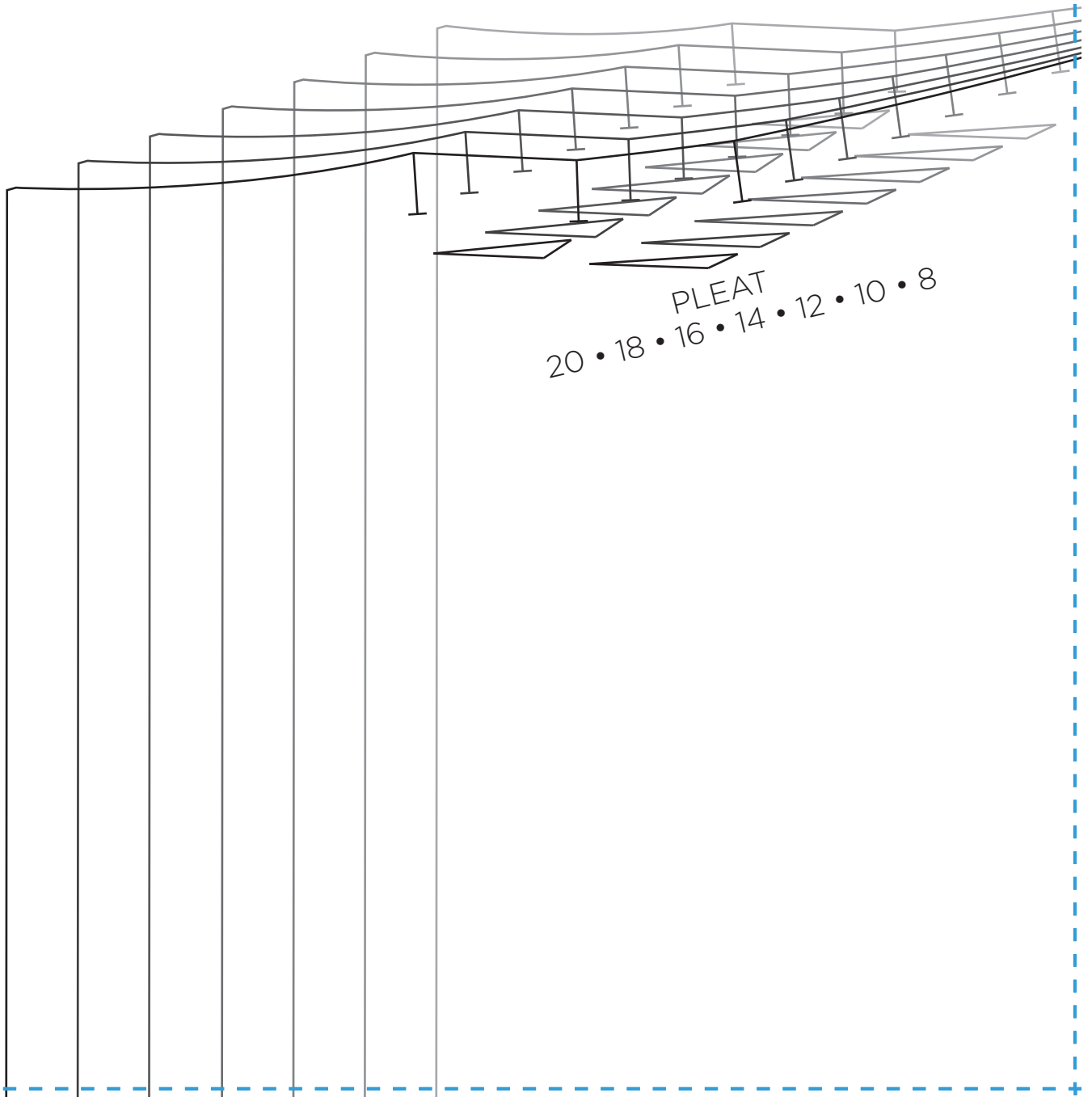


# HAZEL SKIRT PATTERN LAYOUT

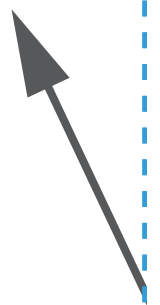
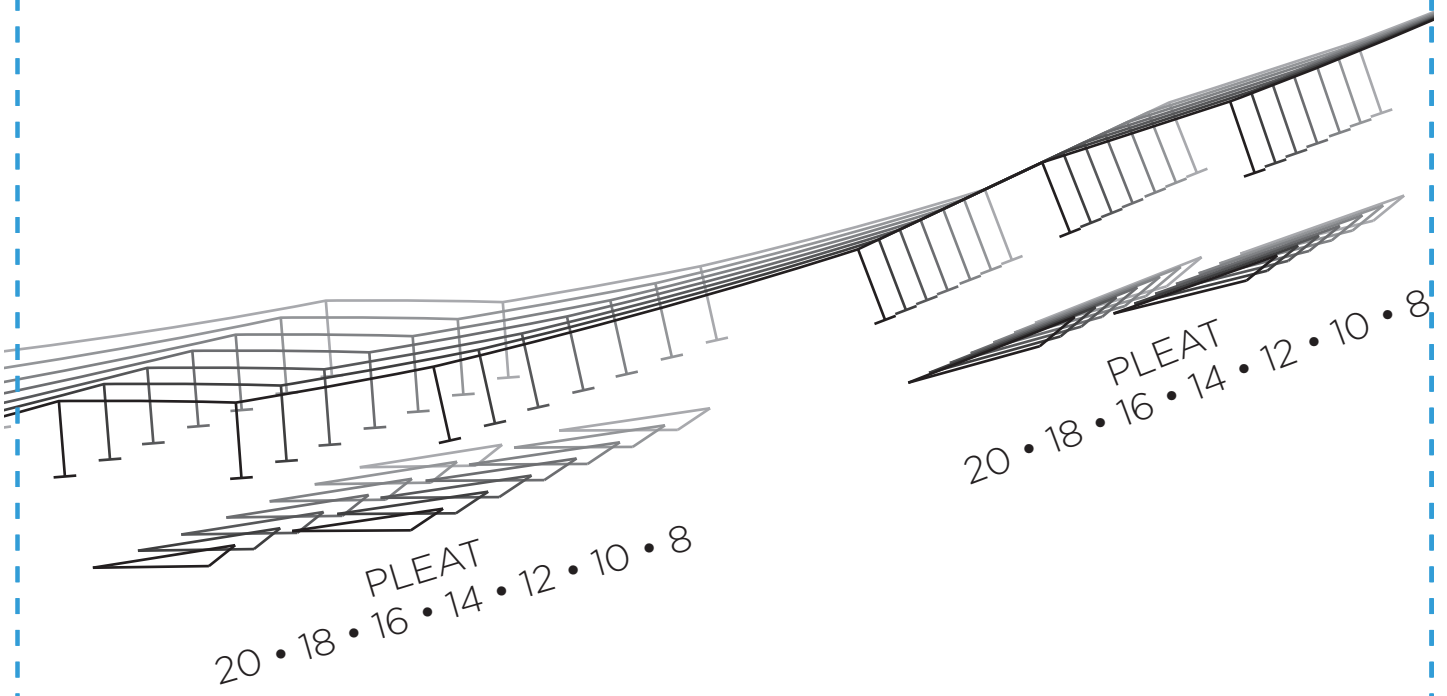




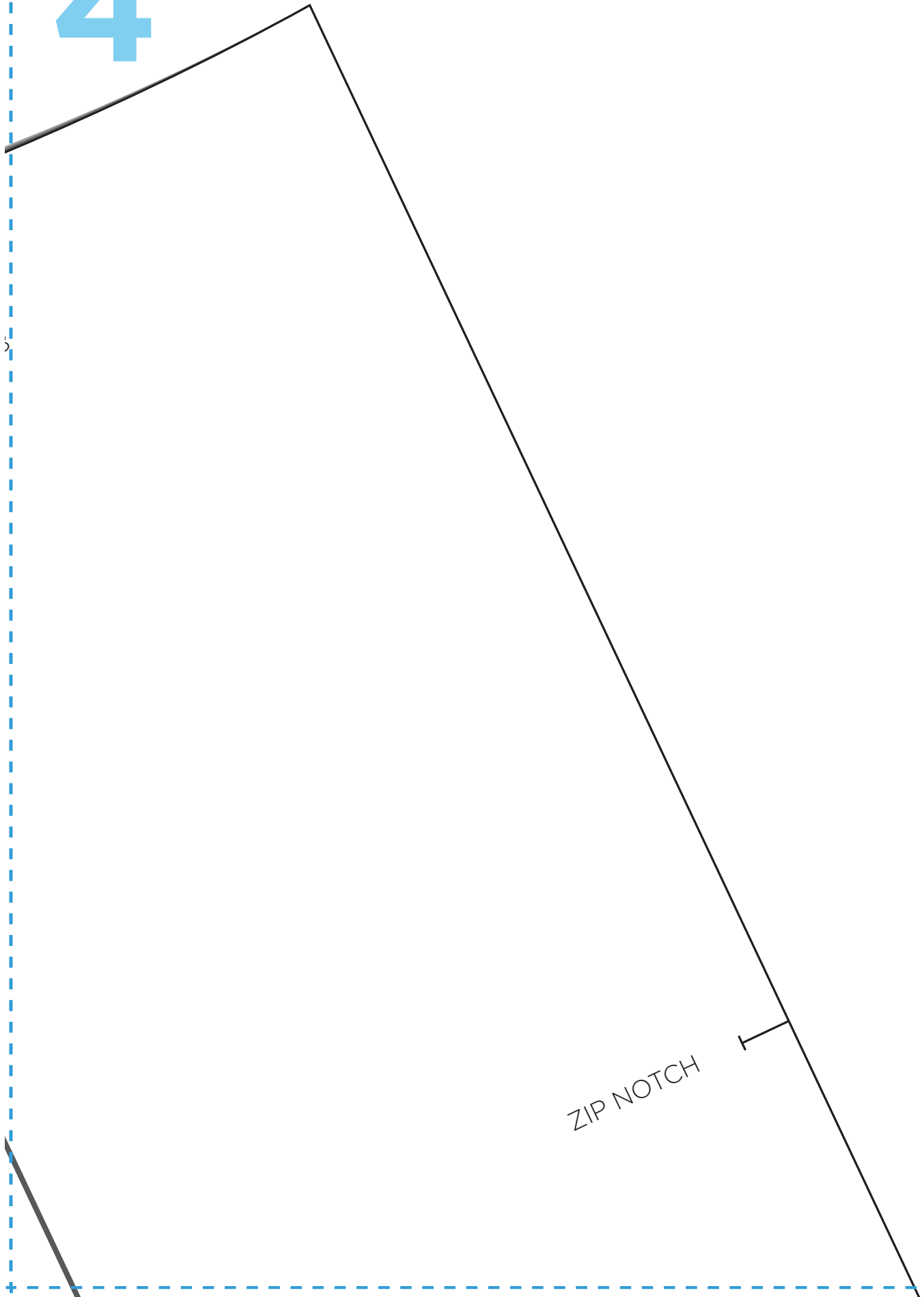
# 2



# 3



4



10  
5

8  
← SIZES

HAZEL SKIRT  
**WAISTBAND**  
CUT ONE IN FABRIC  
CUT ONE IN INTERFACING

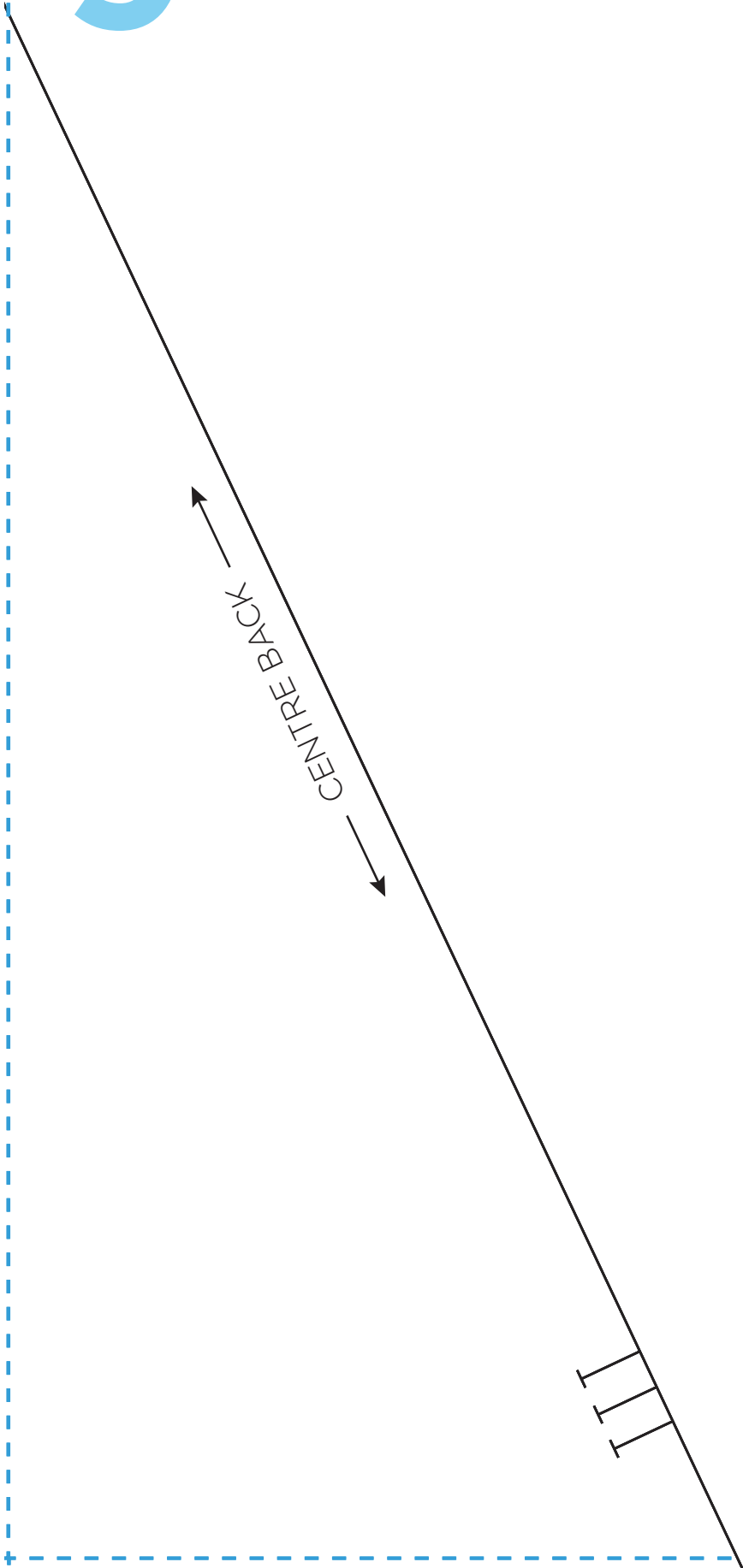
6

7

HAZEL SKIRT  
**BACK SKIRT**  
CUT ONE PAIR

8

9



10

← INTERFACING →

CUT HERE FOR INTERFACING



11

20 18 16 14 12 10 8 ← SIZES

2.5CM HEM

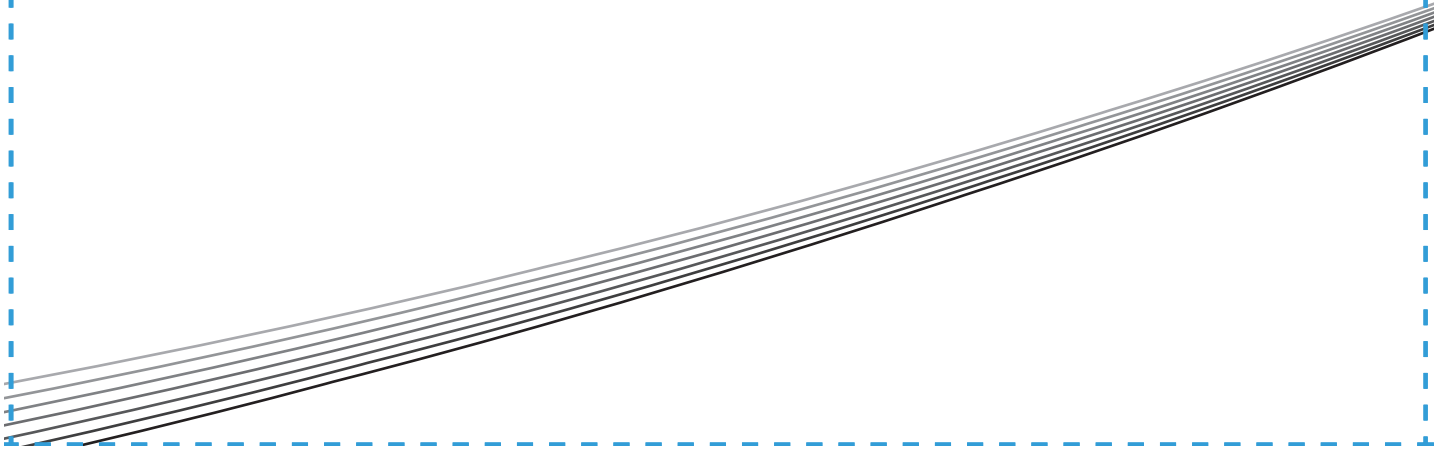
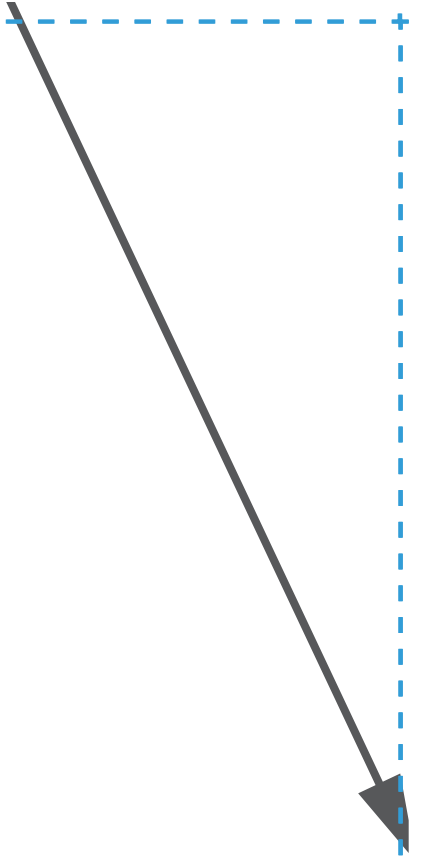
11

20 18 16 14 12 10 8 ← SIZES

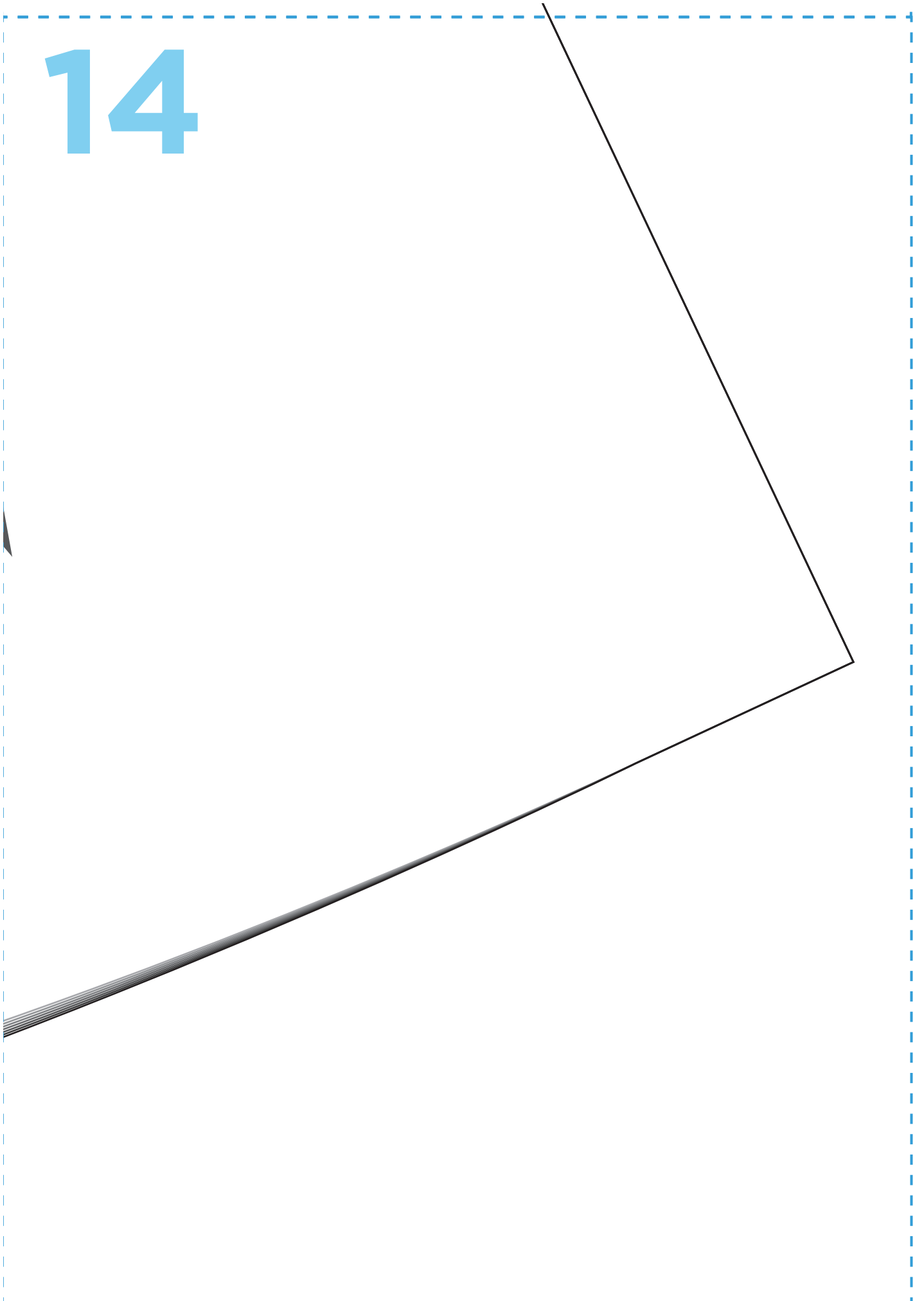
2.5CM HEM

12

13



14

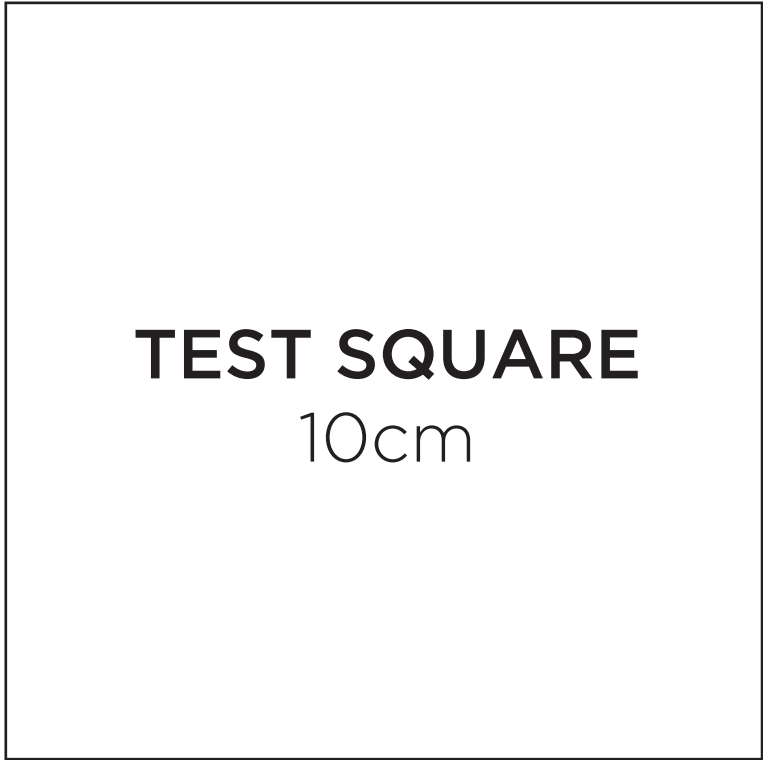


15

FOLD LINE

← CENTRE BACK →

16

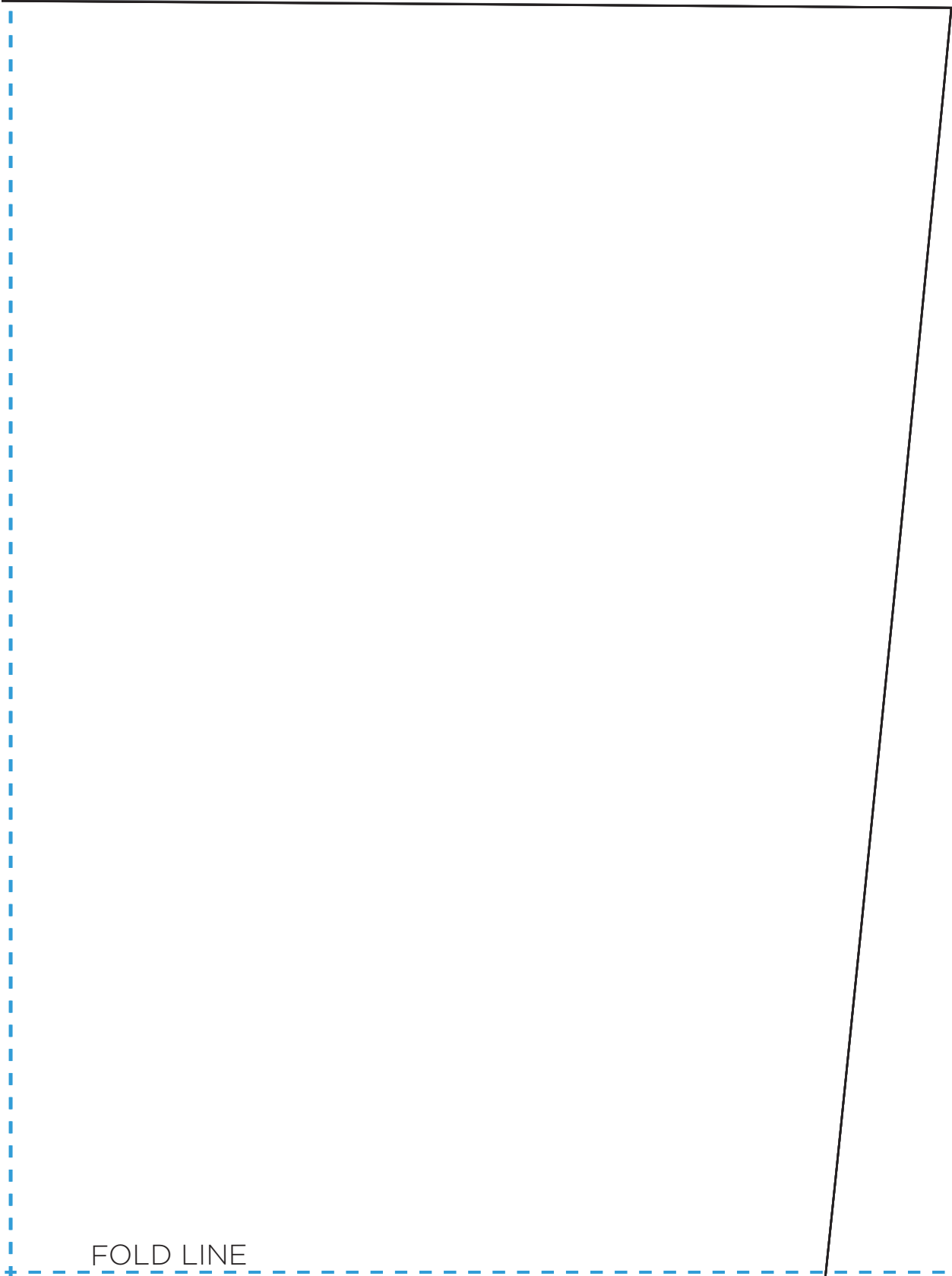


17

← BASE OF POCKET →

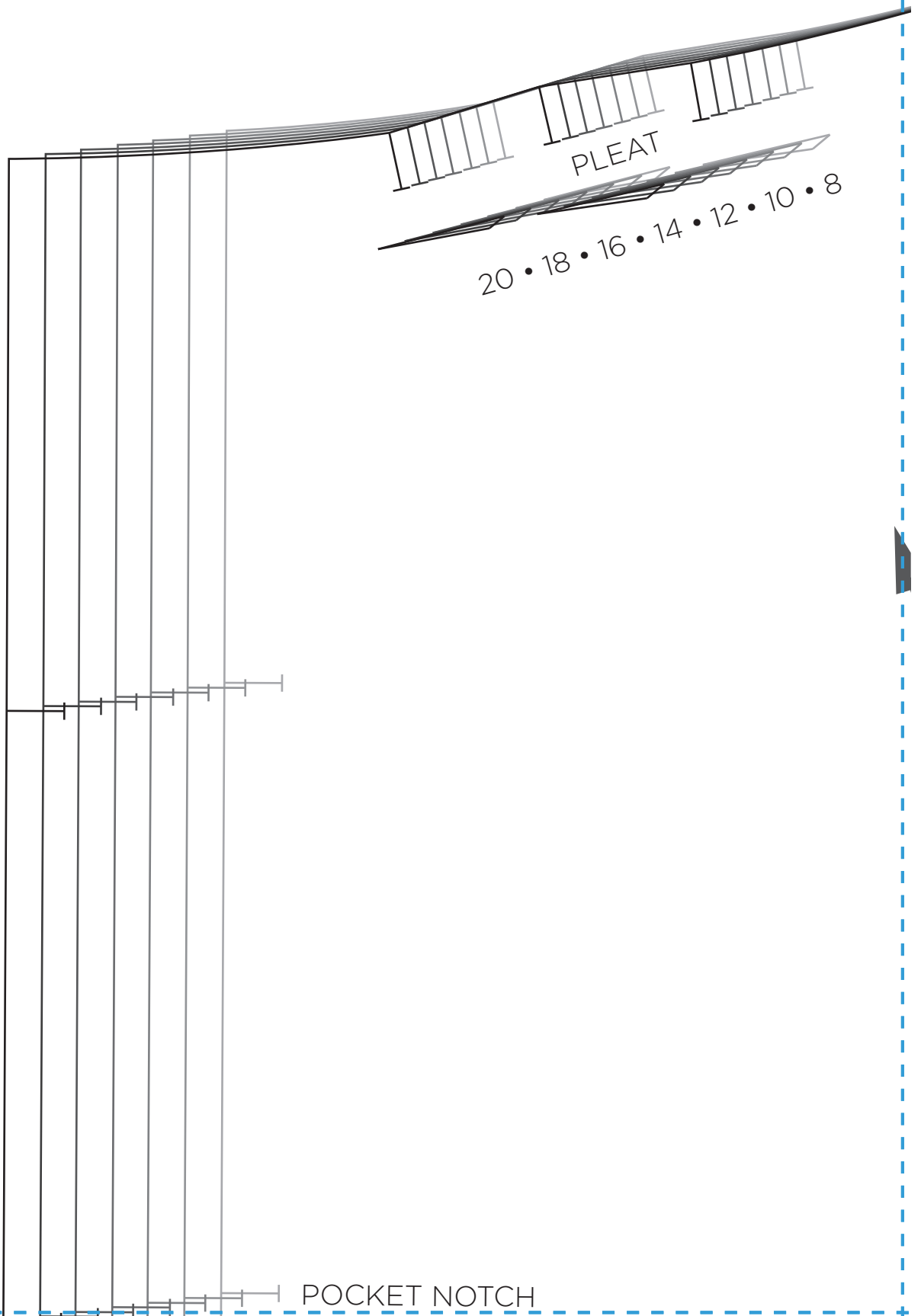
POCKET BAG

# 18



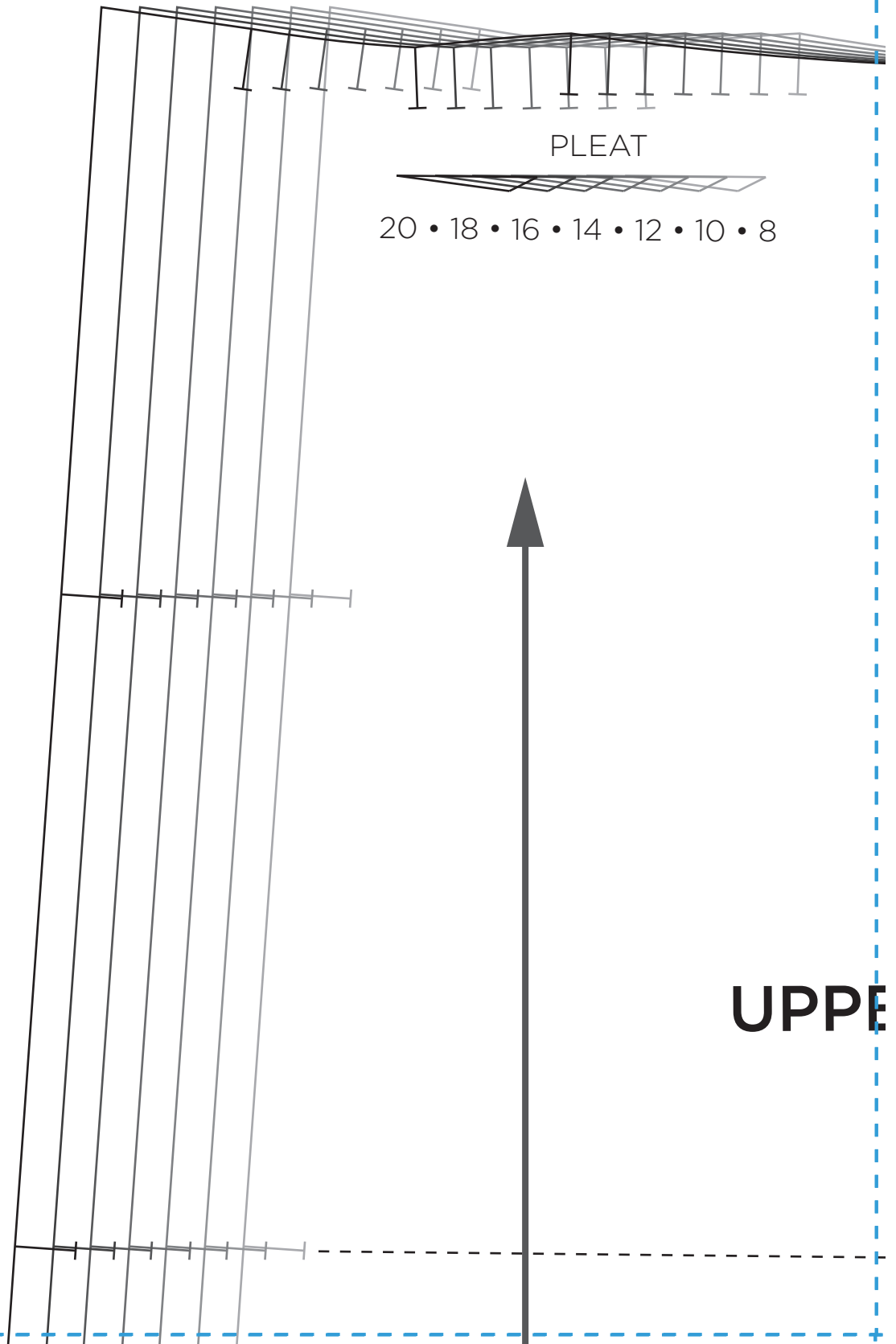
FOLD LINE

# 19

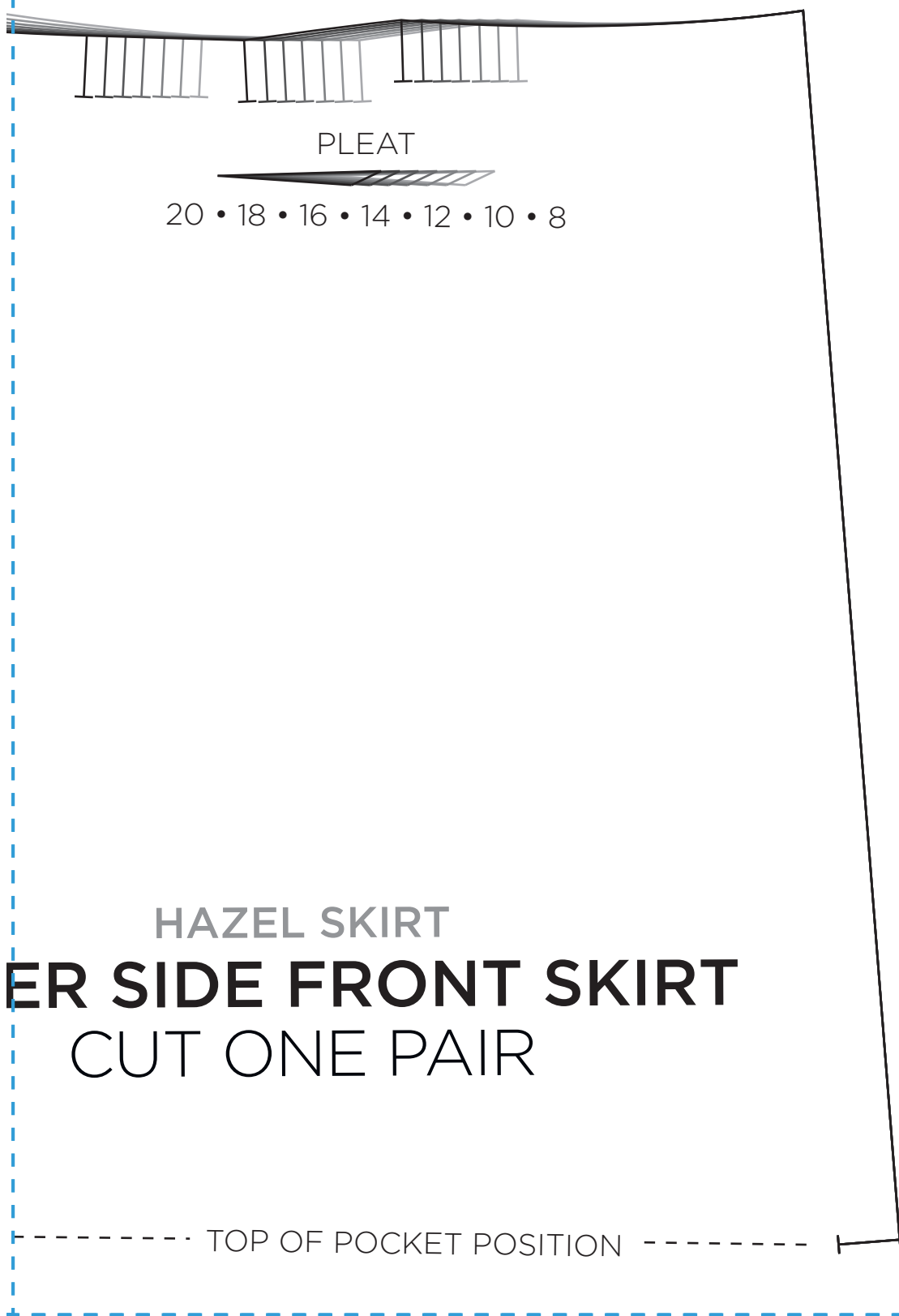




# 21



# 22



HAZEL SKIRT  
**FRONT SIDE FRONT SKIRT**  
CUT ONE PAIR

TOP OF POCKET POSITION

23



LOWER SKIRT  
CUT

24

HAZEL SKIRT  
**SIDE FRONT SKIRT**  
JT ONE PAIR

SIDE SEAM →

25

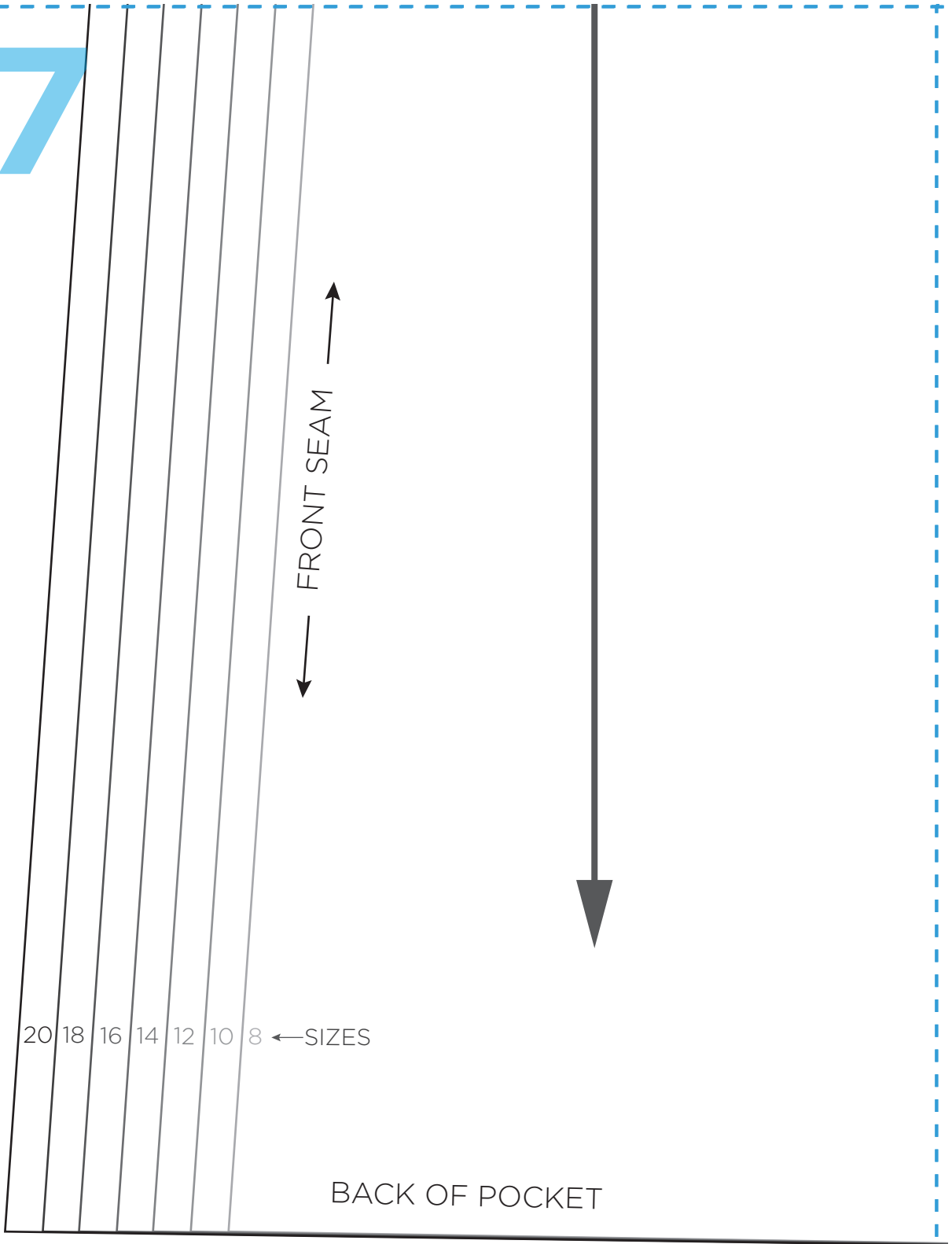
HAZEL SKIRT  
**FRONT SKIRT**  
CUT ONE ON THE

26

RT  
FOLD

PLACE ON FOLD

27

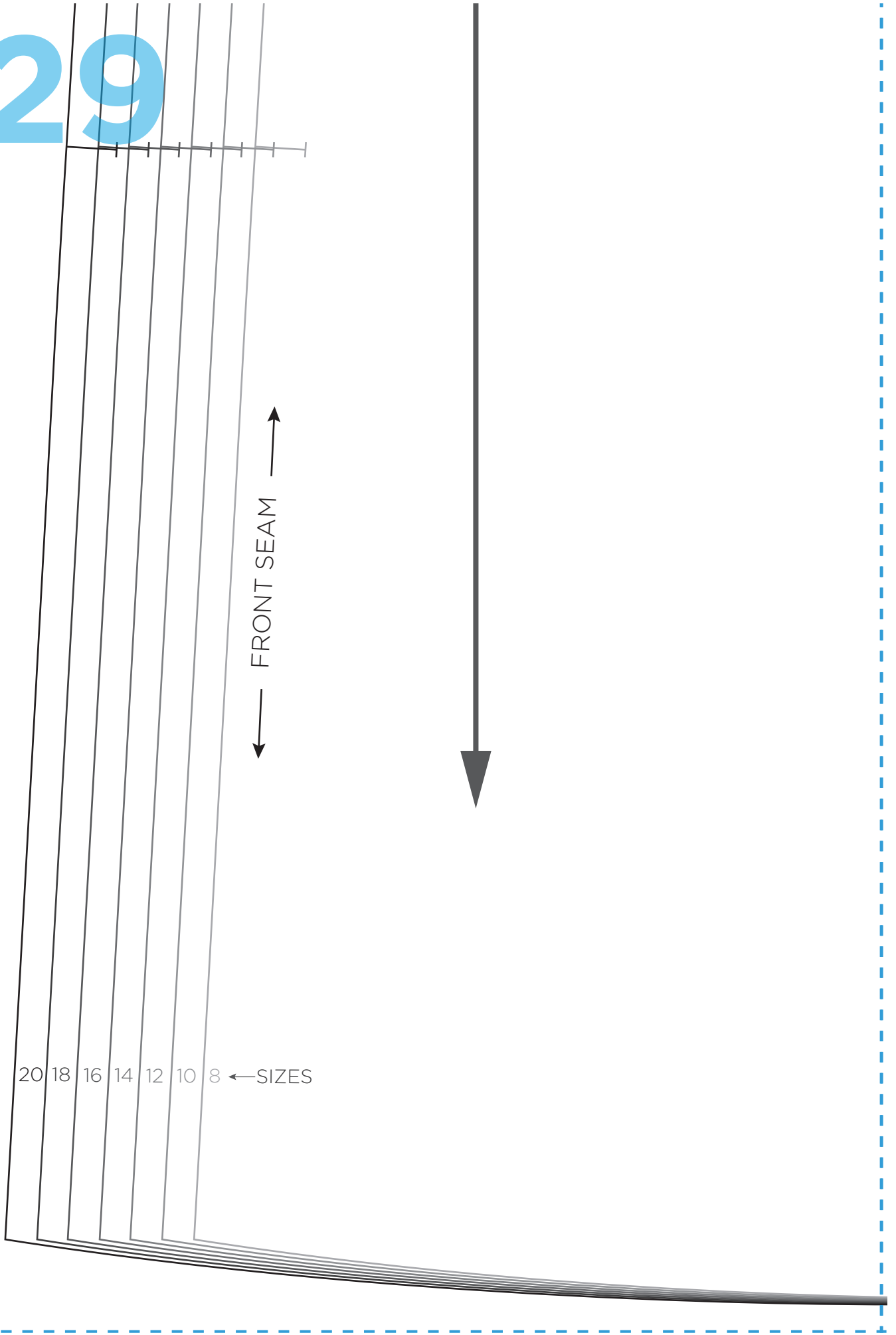


28

SIDE SEAM

A diagram of a trapezoidal pattern piece, likely for a skirt or a similar garment. The piece is defined by a solid black line. The top edge is a horizontal line. The bottom edge is a horizontal line, slightly longer than the top edge. The left side is a vertical line. The right side is a slanted line. A dashed blue line forms a rectangular border around the pattern piece. On the right side, the text "SIDE SEAM" is written vertically, with two arrows pointing outwards from the slanted edge, one pointing upwards and one pointing downwards.

# 29

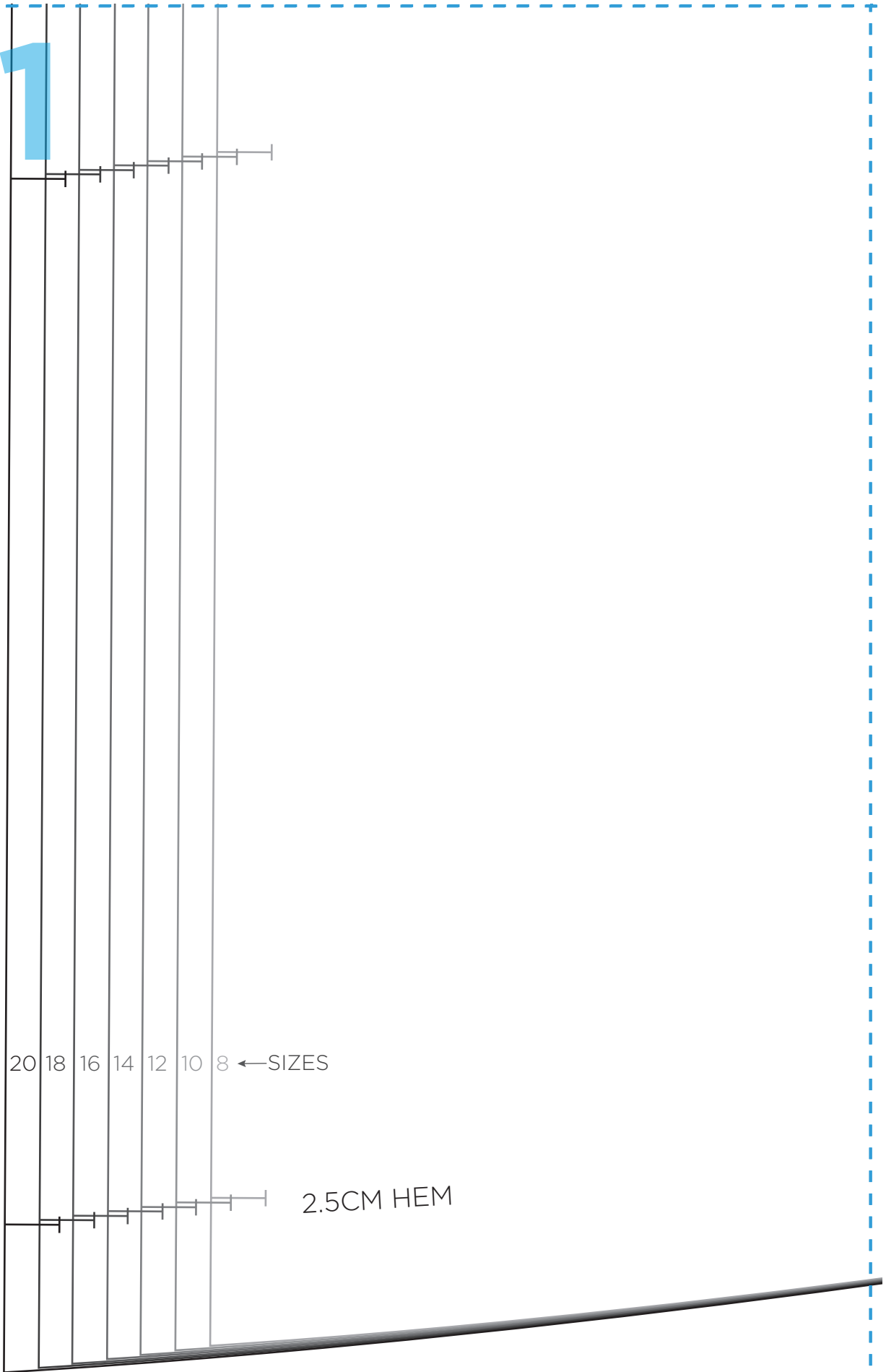


30

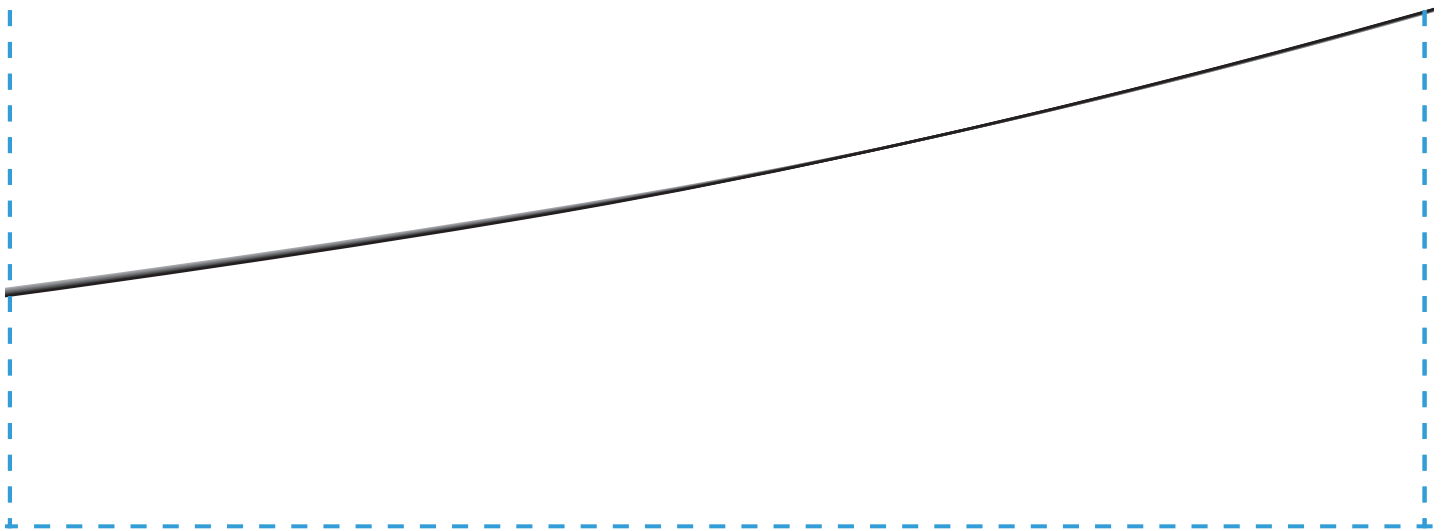
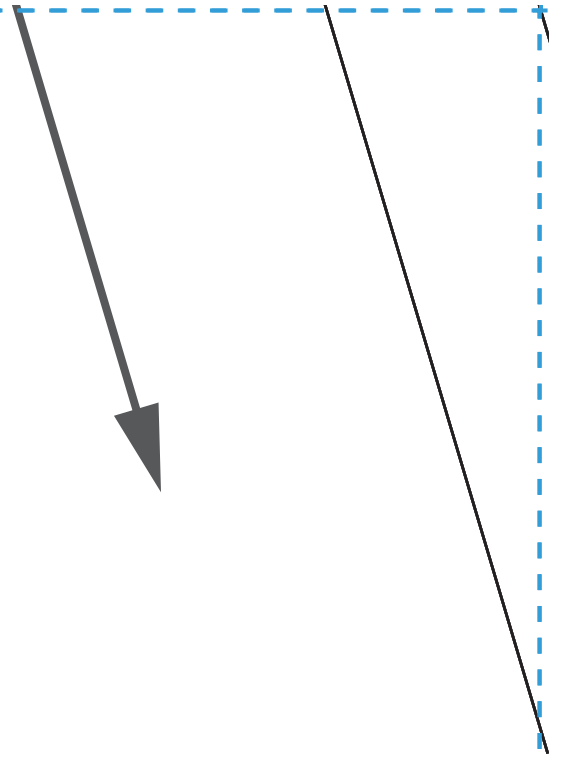


2.5CM HEM

# 31



32



# 33

