

We love
STYLE

Cosy comfort **CARDIE**

Relax in comfort and style with a
boxy knit cardie

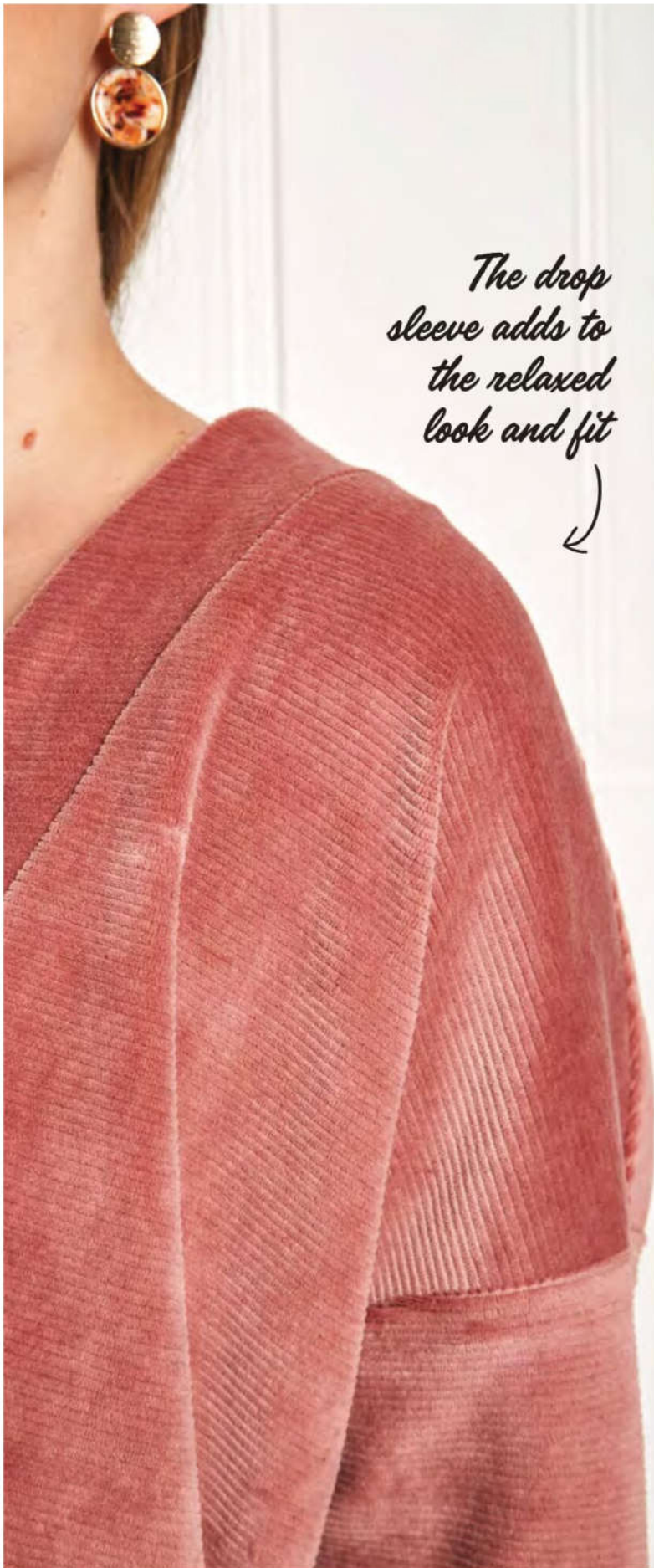
Project **JULIA CLARIDGE**
www.bobbinsnbuttons.co.uk



ABOUT **BOBBINS & BUTTONS**

Bobbins & Buttons is a hub of sewing based in the East Midlands, offering own-brand patterns, fabric and workshops. Julia designs a range of sewing patterns for all the family. Styles are versatile, adaptable and easy to make. A collection of fabric that suits the sewing patterns is available. Julia offers sewing classes that are flexible to your skill level and geared towards what you would like to learn.

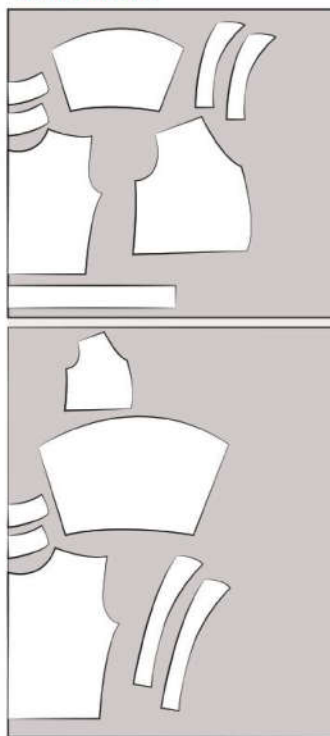
For more information,
visit Julia's website
www.bobbinsnbuttons.co.uk



The drop sleeve adds to the relaxed look and fit



LAYPLAN:



MATERIALS & TOOLS:

- knit fabric with at least 50% stretch - 1.25m x 1.50m wide (size 8-16) 1.85x1.50m (size 16-20)
- 3 x 30mm buttons
- medium-weight interfacing
- pattern downloaded from www.craftworld.com/cms/love-sewing

NOTES:

Use a 1.5cm seam allowance unless stated otherwise
 Stitch using a shallow zigzag or stretch stitch for the main construction
 Use straight stitch around for the neck facing application

CUTTING

From main fabric, cut:

- 1 pair of front bodice pieces
- 1 back on fold
- 2 back neck facings
- 2 pairs front neck facing

GARMENT MEASUREMENTS IN CM

	8	10	12	14	16	18	20
Bust	91cm	96cm	101cm	106cm	111cm	116cm	121cm
Length from side neck point to hem	56cm	57cm	58cm	59cm	60cm	61cm	62cm



- 1 pair of sleeves
- From the interfacing, cut:**
- 1 pair front neck facings
- 1 back neck facing

HOW TO MAKE

1 Apply the interfacing to the neck facings.
2 Stitch the front and back at the shoulders. (See Pic A.)
3 Matching the centre of the sleeve head to the shoulder seam, stitch the sleeve to the armhole RST. Repeat with the other side. (See Pic B.)
4 With RST, stitch the cardigan side seams starting at the sleeve end and finishing at the end of the side seam. (See Pic C.)
5 Fold the hem band in half lengthways, press. Fold in half to find the centre and mark the raw edges. Fold again to find the quarter points. With RST, pin the folded band so that the centre back matches the centre back and the quarters match the side seams. Stitch pulling the hem band to fit

and ensuring all seams are together. (See pics D & E)
6 With RST, stitch the back neck facing to the upper edge of the front neck facing pieces. Repeat with the interfaced pieces. (See Pic F.)
7 With RST, pin the outer edge of the un-interfaced neck facing to the neck edge of the cardigan. Match the facing shoulder seams to the garment shoulder seams. The facing should extend 1.5cm below the lower edge of the garment. Stitch. (See Pic G.)
8 Fold out the facing into position. With RST and shoulder seams matched, pin the interfaced facing piece to the outer edge of the facing piece stitched to the garment. Stitch starting along the lower edge in line with lower edge of the garment, finishing at the same point on the other side. Trim the seam, clip the curve at the neck edge and turn to the right side. (See pics H & I.)

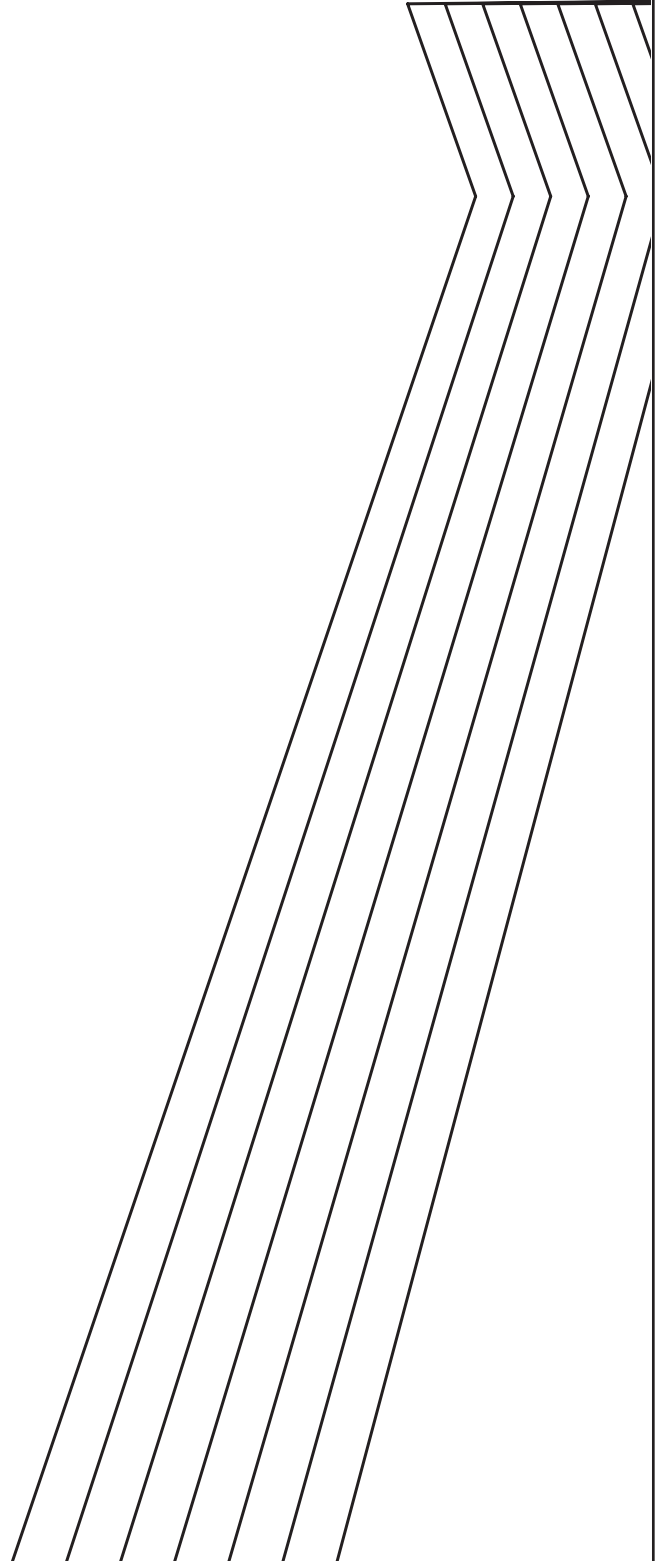


Shopping list

Cotton blend knit corduroy in Misty Rose, £18 per metre www.bobbinsnbuttons.co.uk

9 Understitch the facing, stitching from as close as you can get at the lower edge, around to the other side. (See Pic J.)
10 Stitch the facing edges together as they are with WST, stitching close to the line of stitching that joins the outer facing to the cardigan. (See Pic K.)
11 Place your buttons along the front facing to decide spacing. Mark and make the buttonholes. Stitch the buttons on the other side. (See Pic L.)
12 Neaten the raw edge of the sleeve, turn and press a 2.5cm single turned hem. Stitch to complete your cardigan.

1

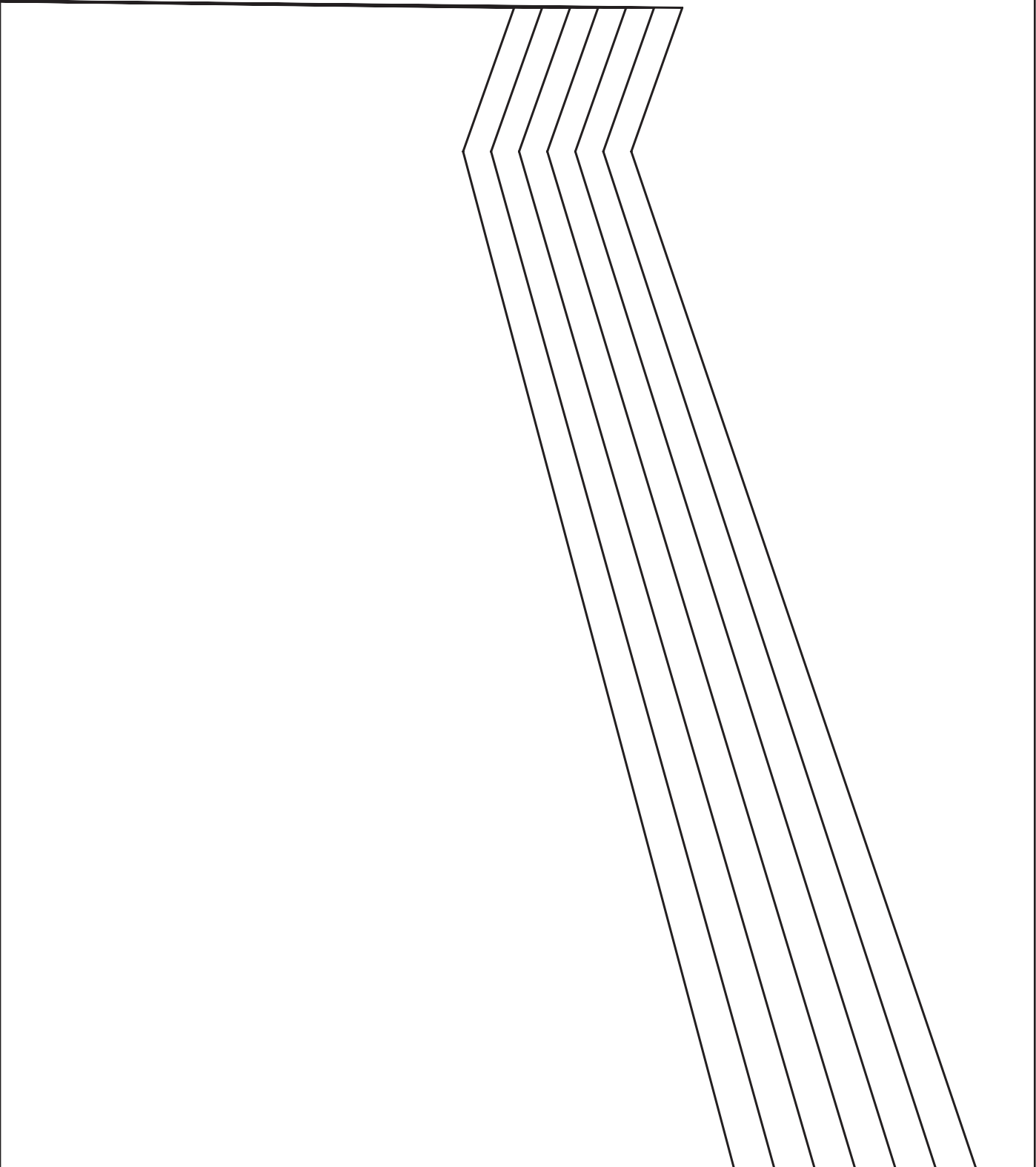


2



8,20 MAIN CUT 1 PAIR

3



4

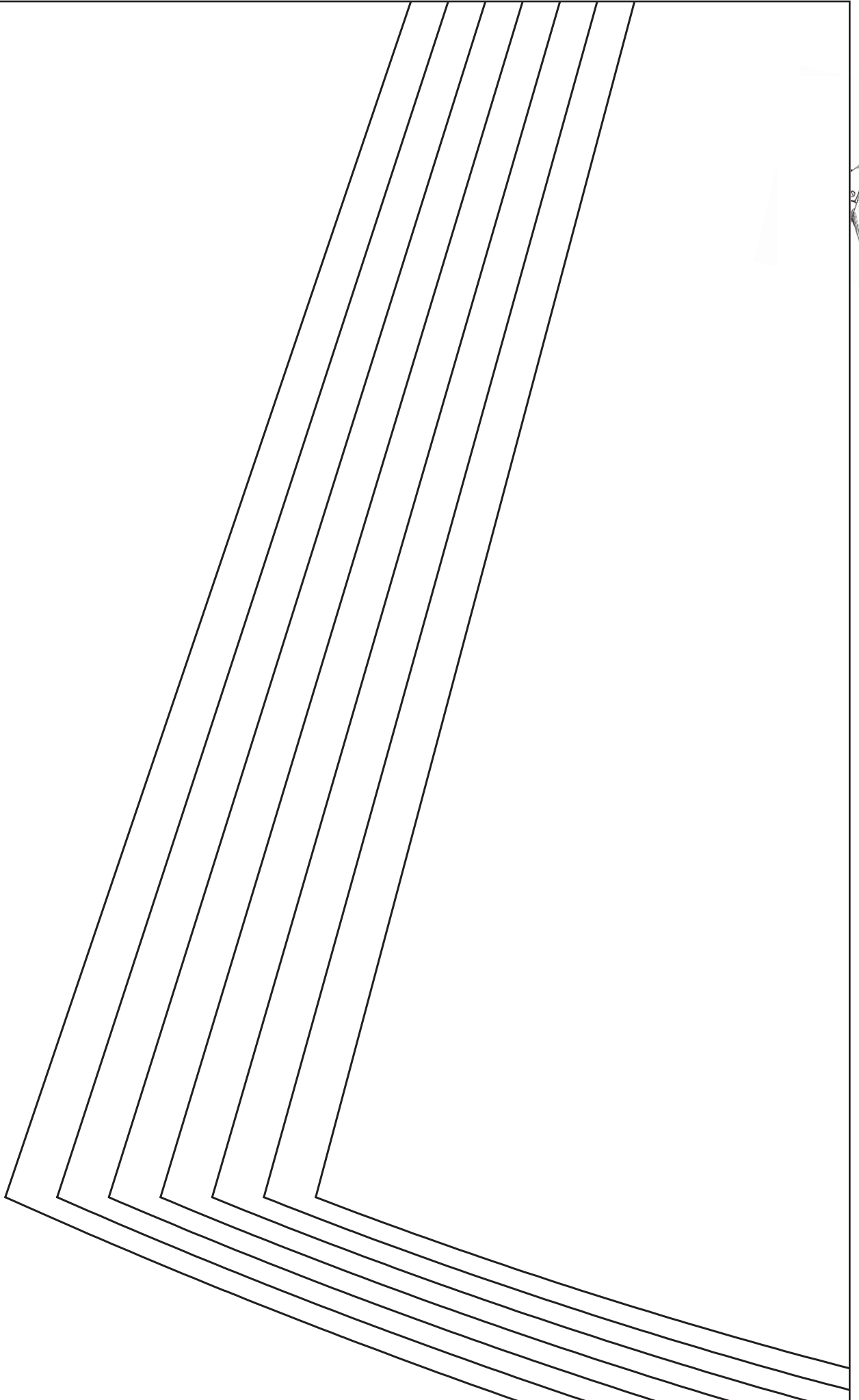


5



3,20 MAIN CUT 2 PAIRS
G(Net)

6



7

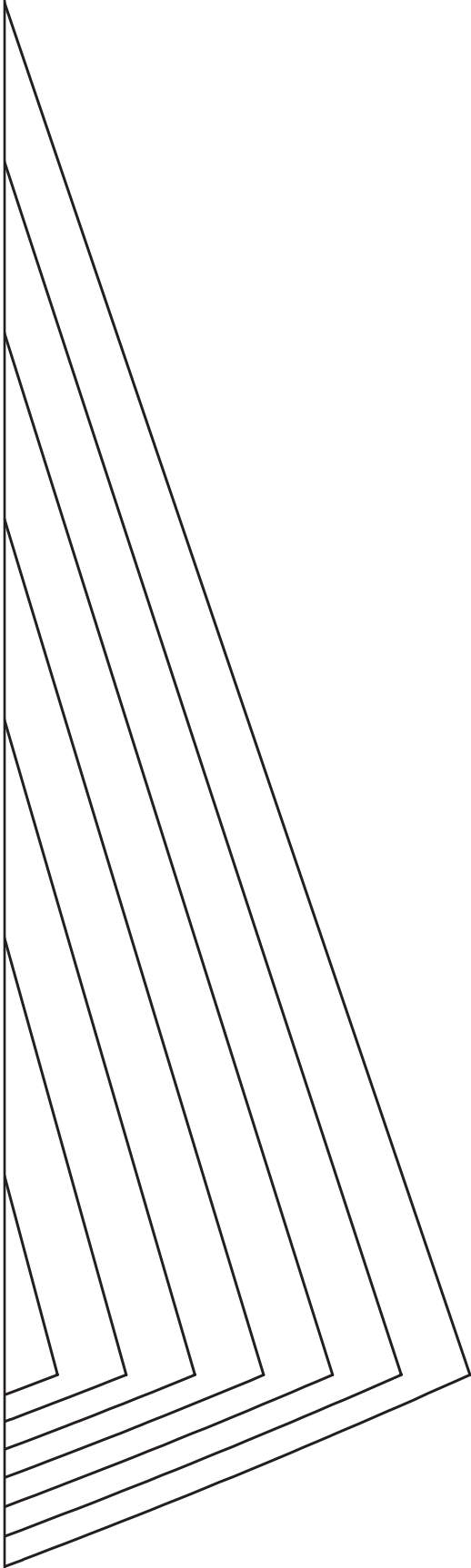
**CARDIGAN GRADED 8,10*,12,14,16,1
SLEEVE(Net)**



8

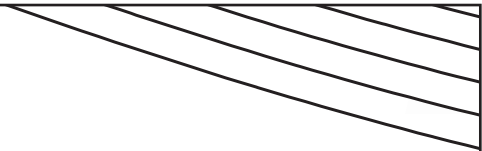


9



CARDIGAN GRADED 8, 10*, 12, 14, 16, 18
FRONT NECK FACING





--	--	--	--	--	--

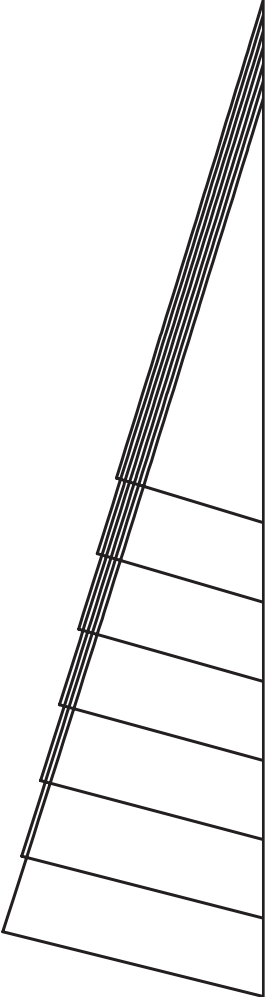
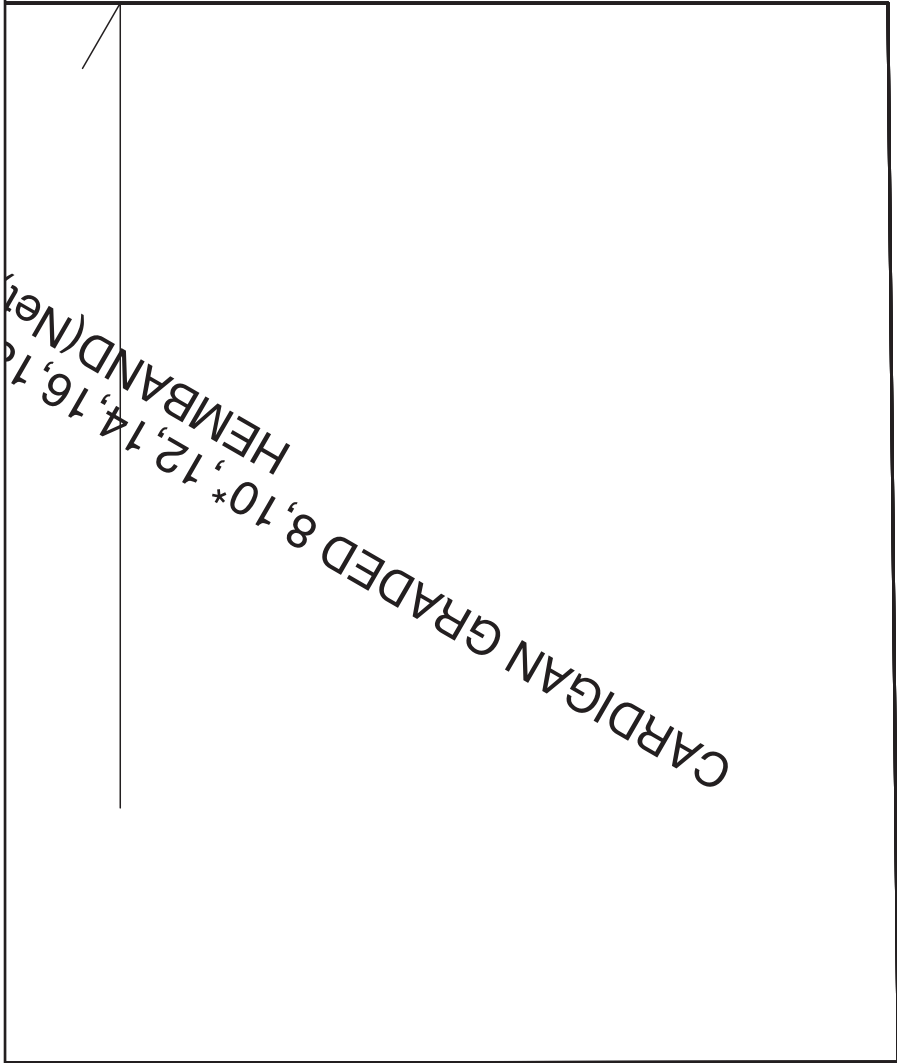
12



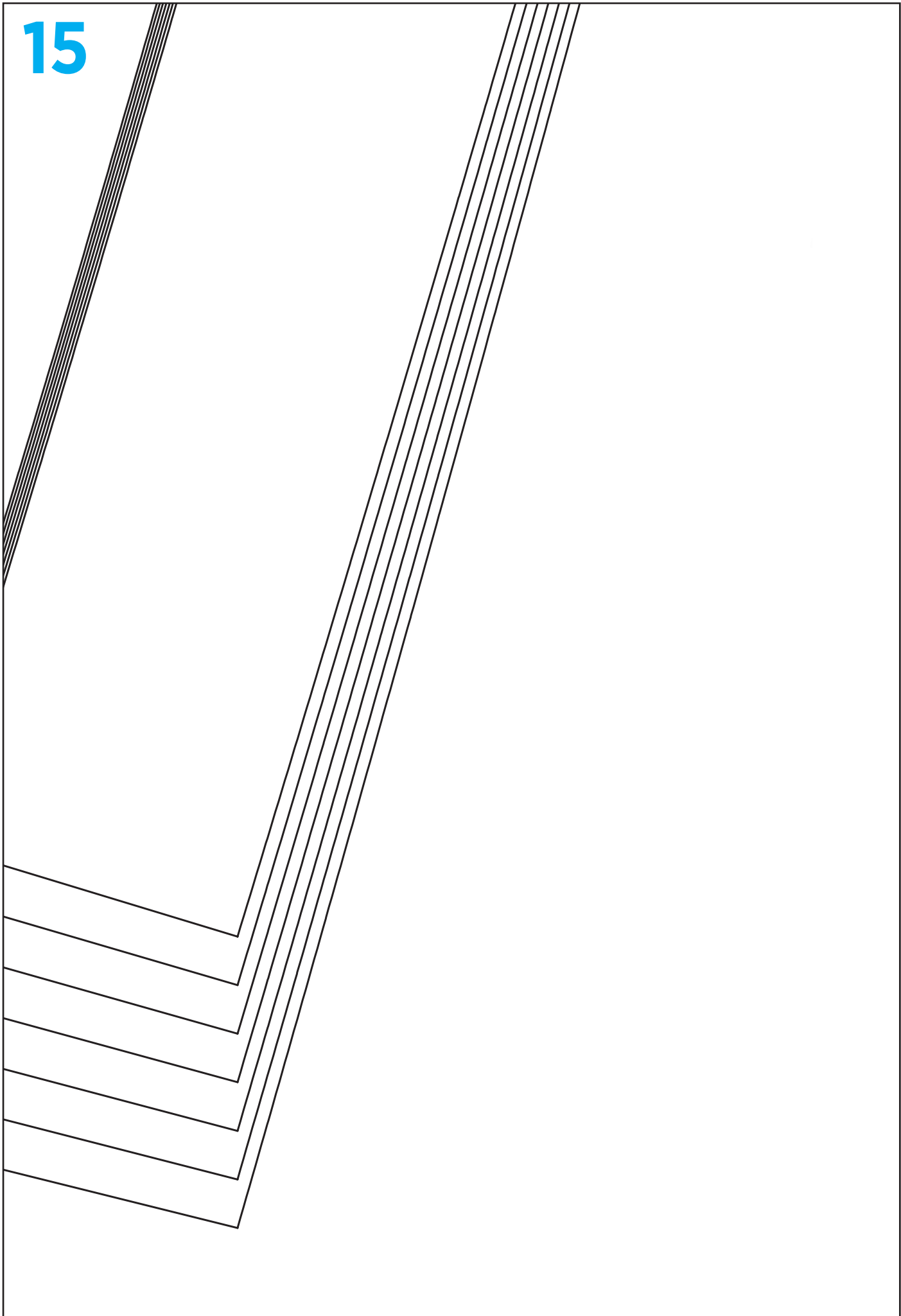
13

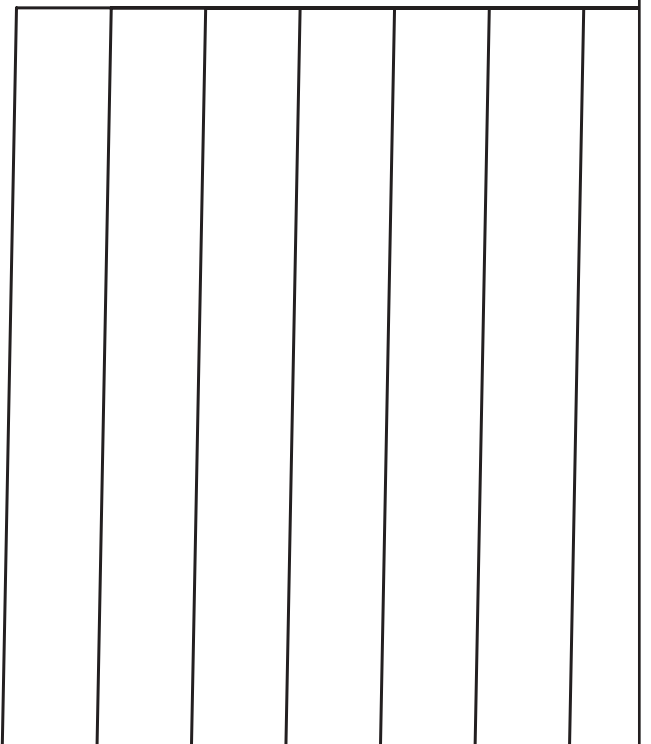
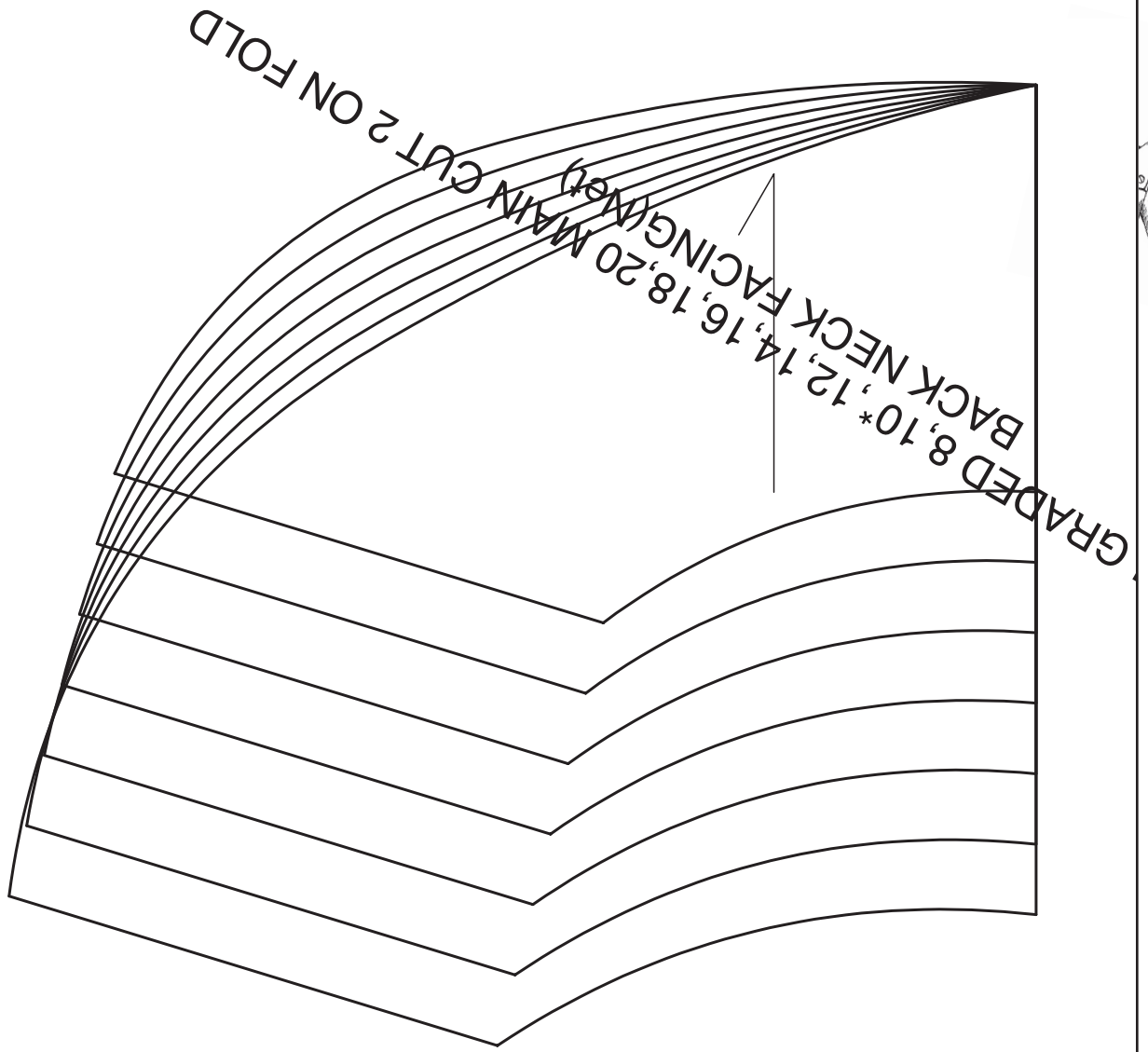


8, 20 MAIN CUT 1 ON FOLD



15





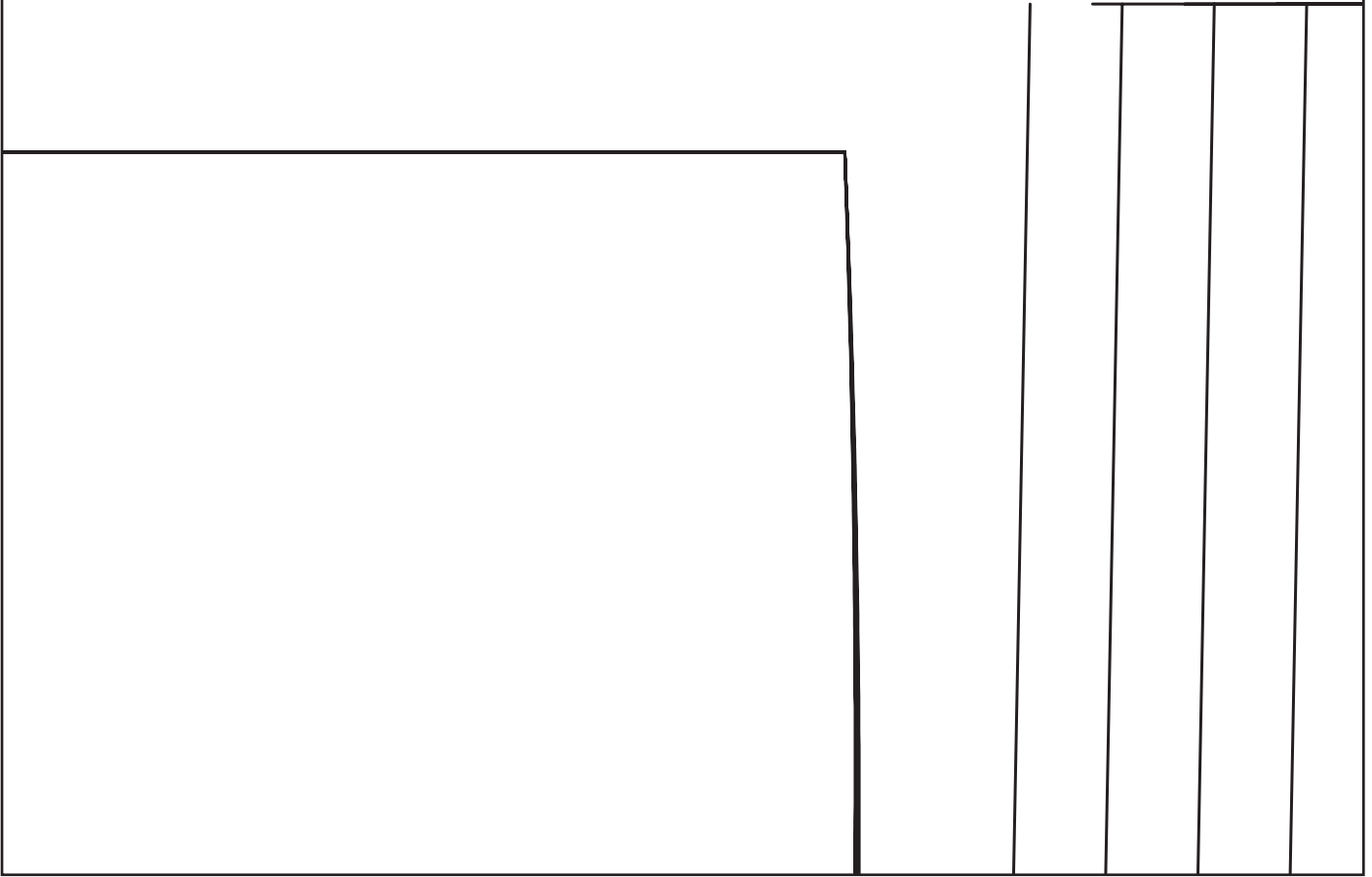
17



CARDIGAN

CUT 1 PAIR







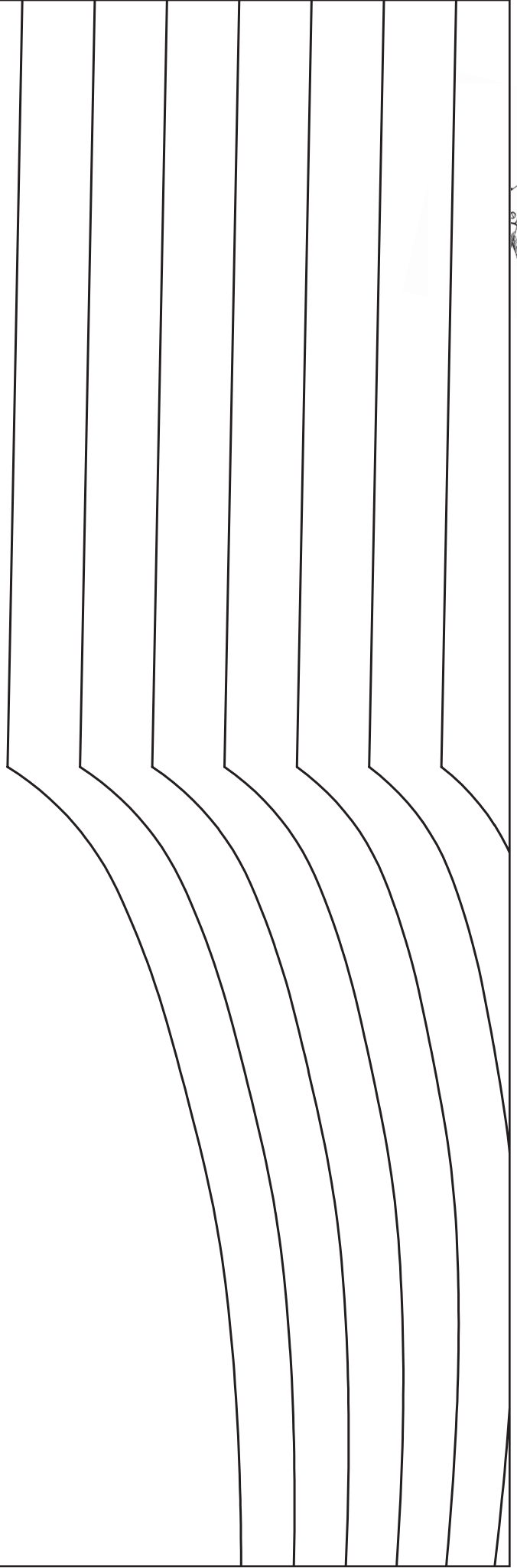
20



FOLD

CARDIGAN GRADED.PLT

NAME:	Fabric	QTY/INV
FRONT	MAIN	2 / 1
FRONT NECK FACING	MAIN	4 / 1
BACK	MAIN	1 / 0
HEMBAND	MAIN	1 / 0
SLEEVE	MAIN	2 / 1
BACK NECK FACING	MAIN	2 / 0



FRONT (Net)
12" 14" 16" 18" 20" MAIN
8" 10" * 12" 14" 16" 18" 20" FRONT



CARDIGAN GRADERS



24



25

DIGAN GRADED 8,10*,12,14,16,18,20 MAIN CUT 1 ON
BACK(Net)



26

REF.

0

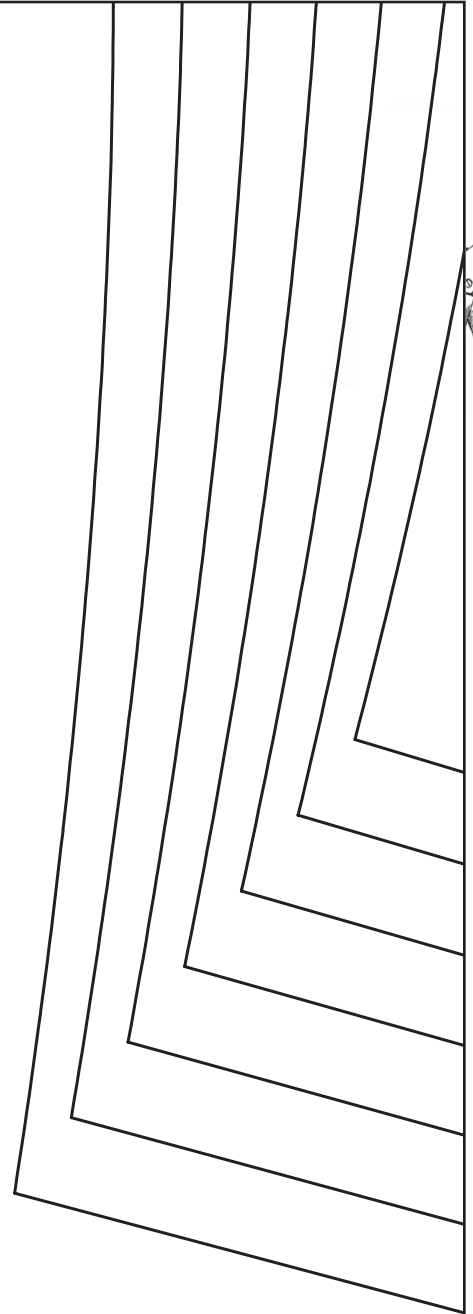
1

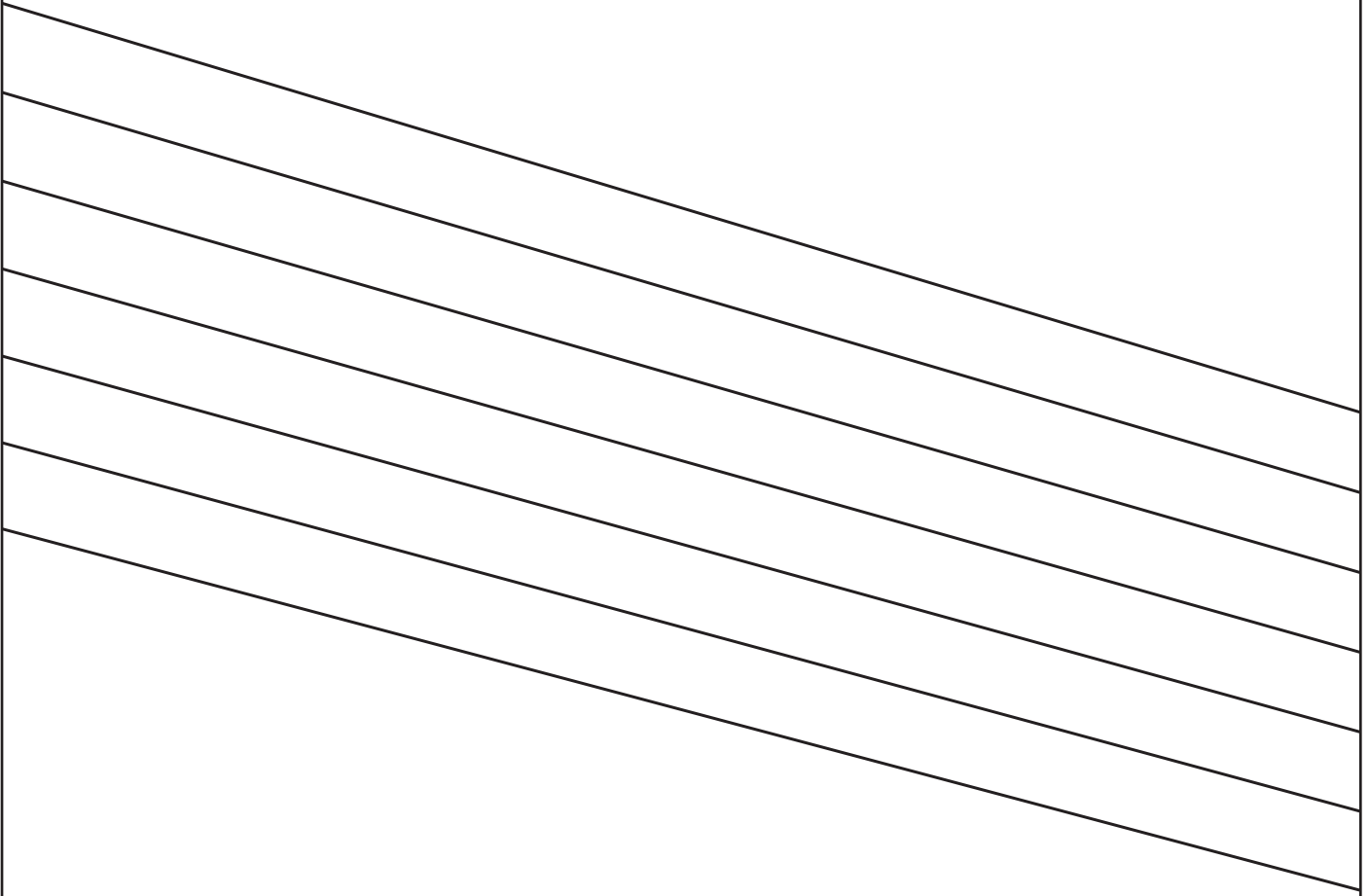
2

3

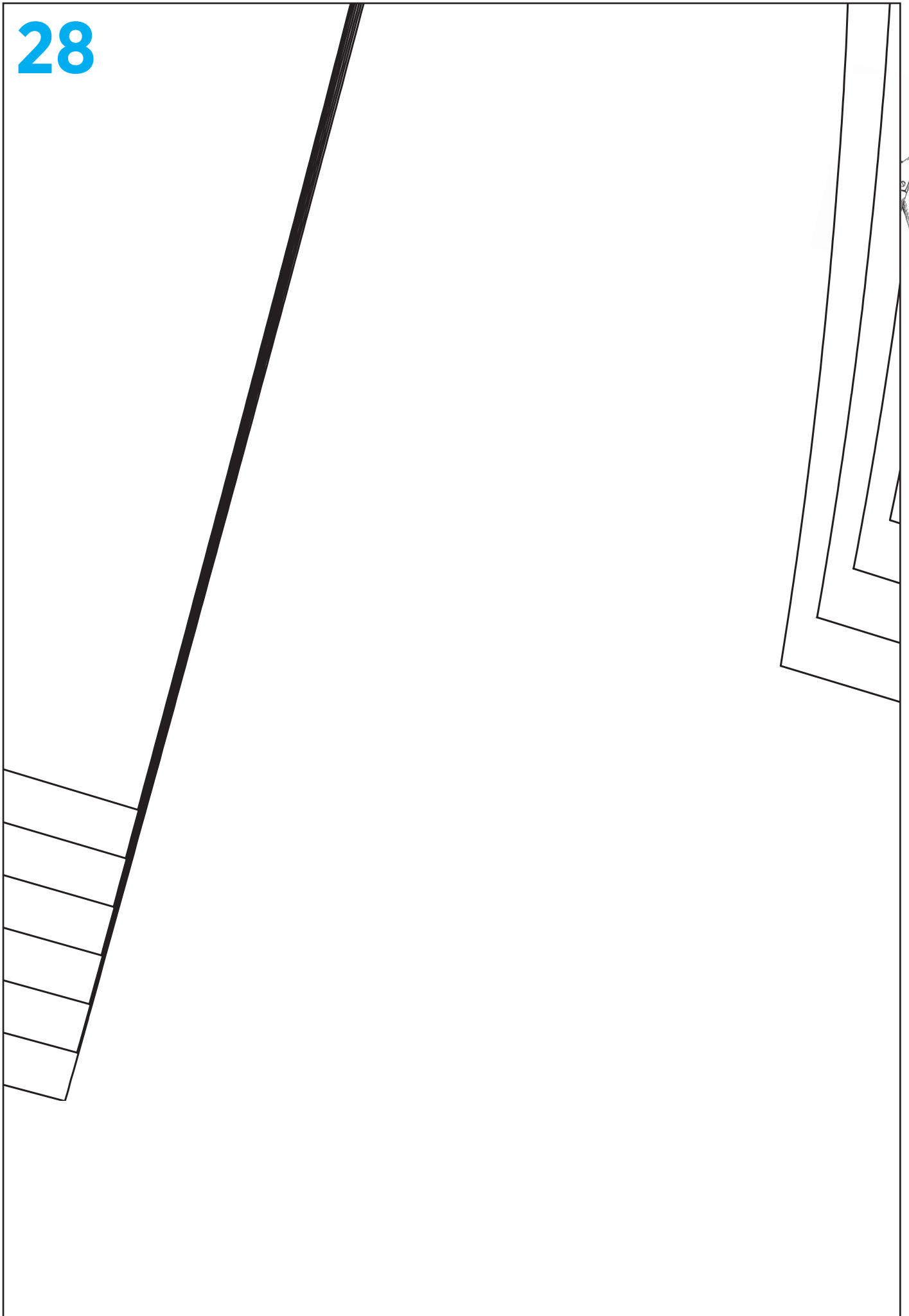
4

5





28



29



30

CAR

