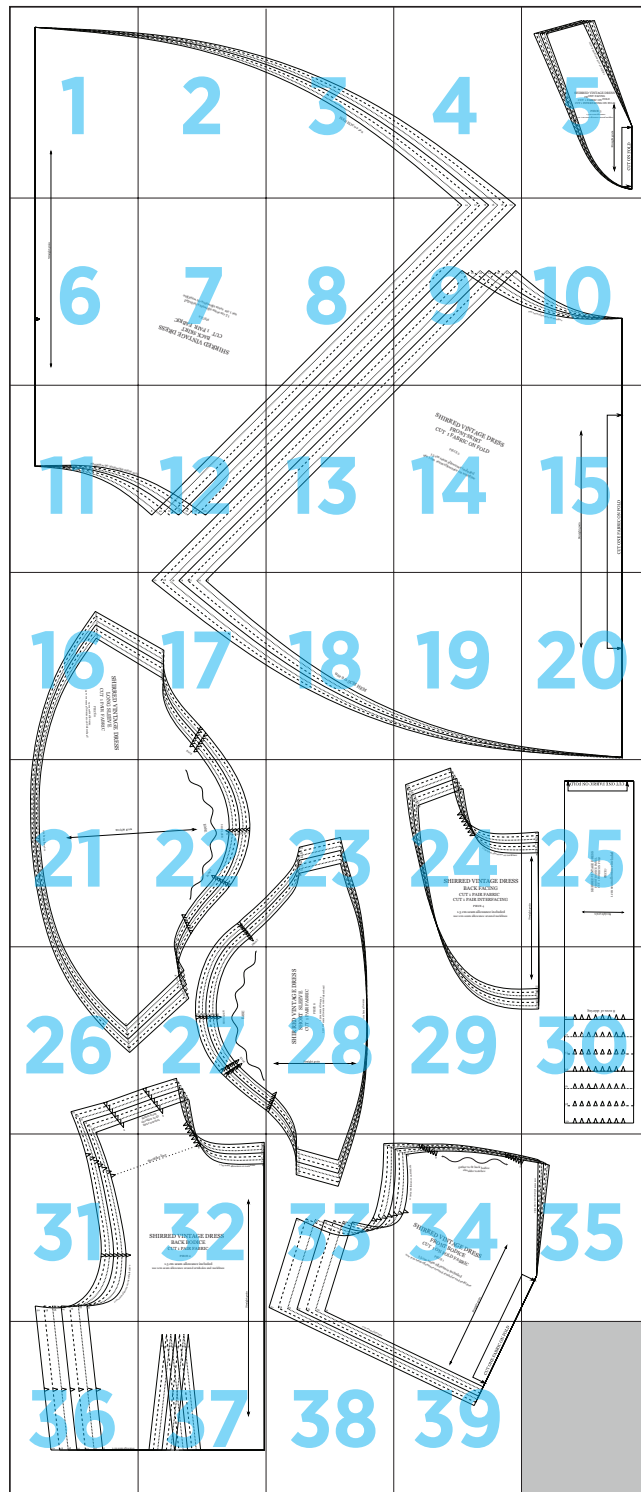
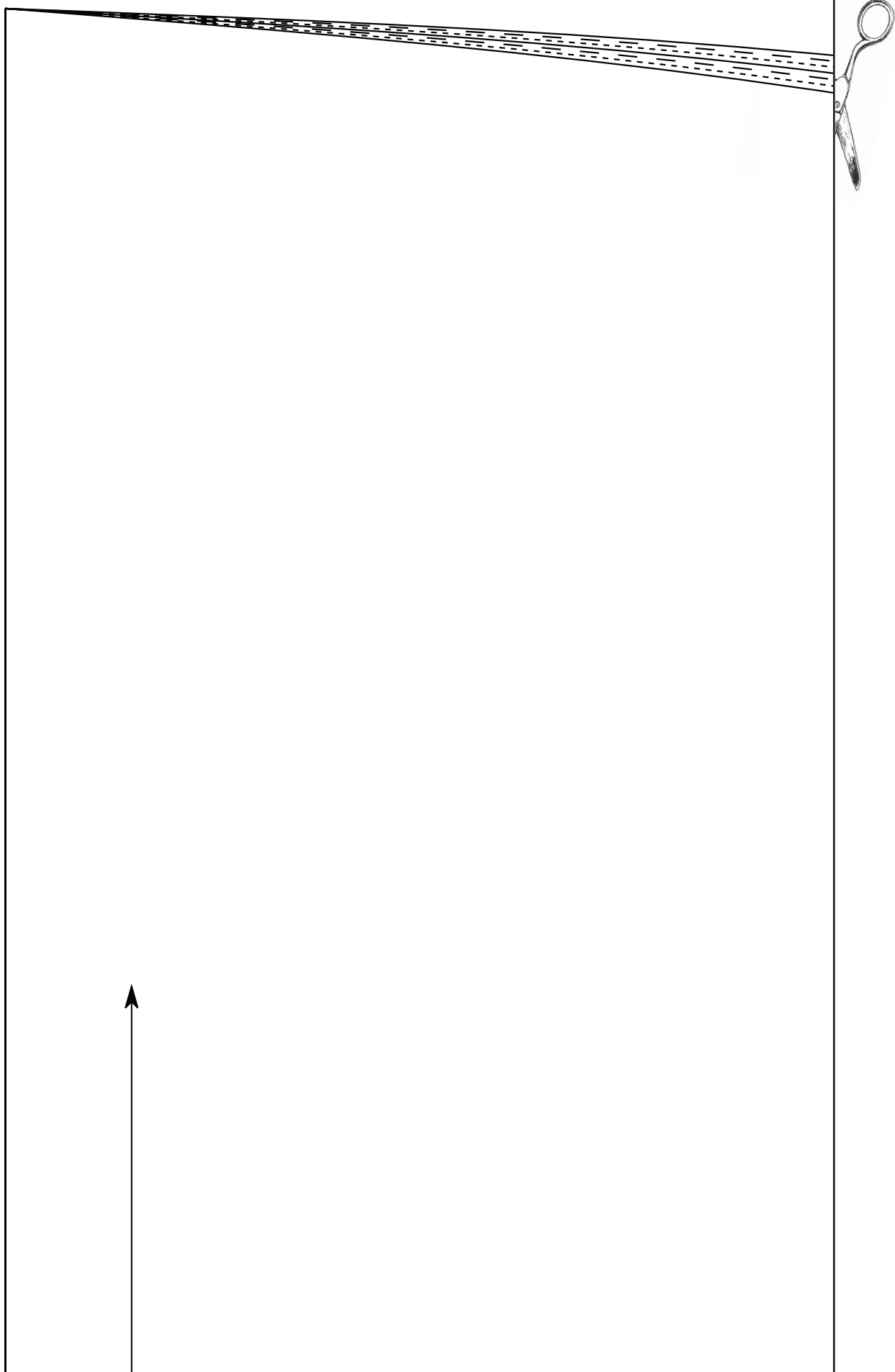


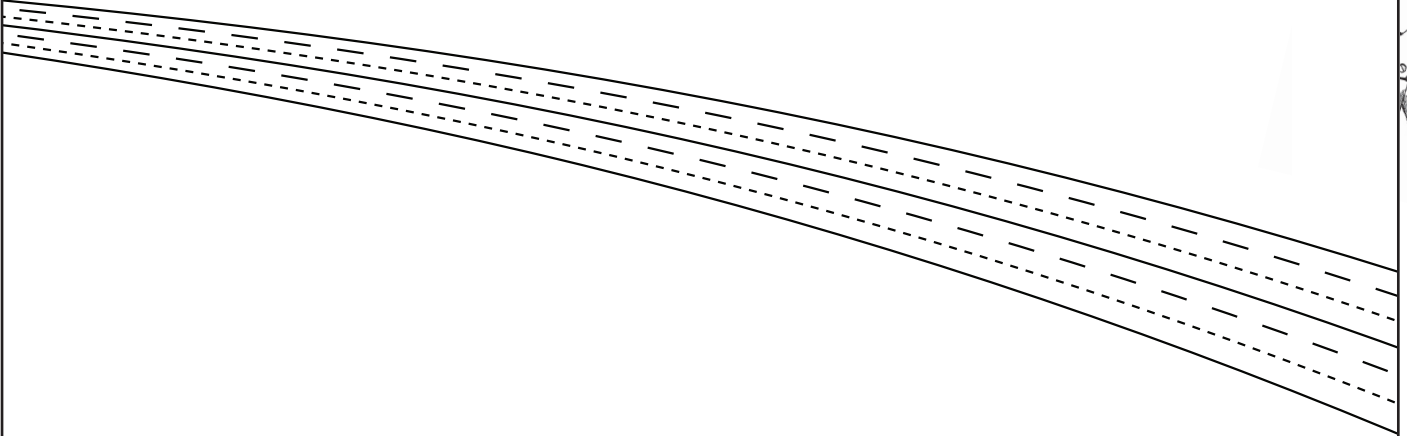
# Simple Sew Tea Dress



1



2

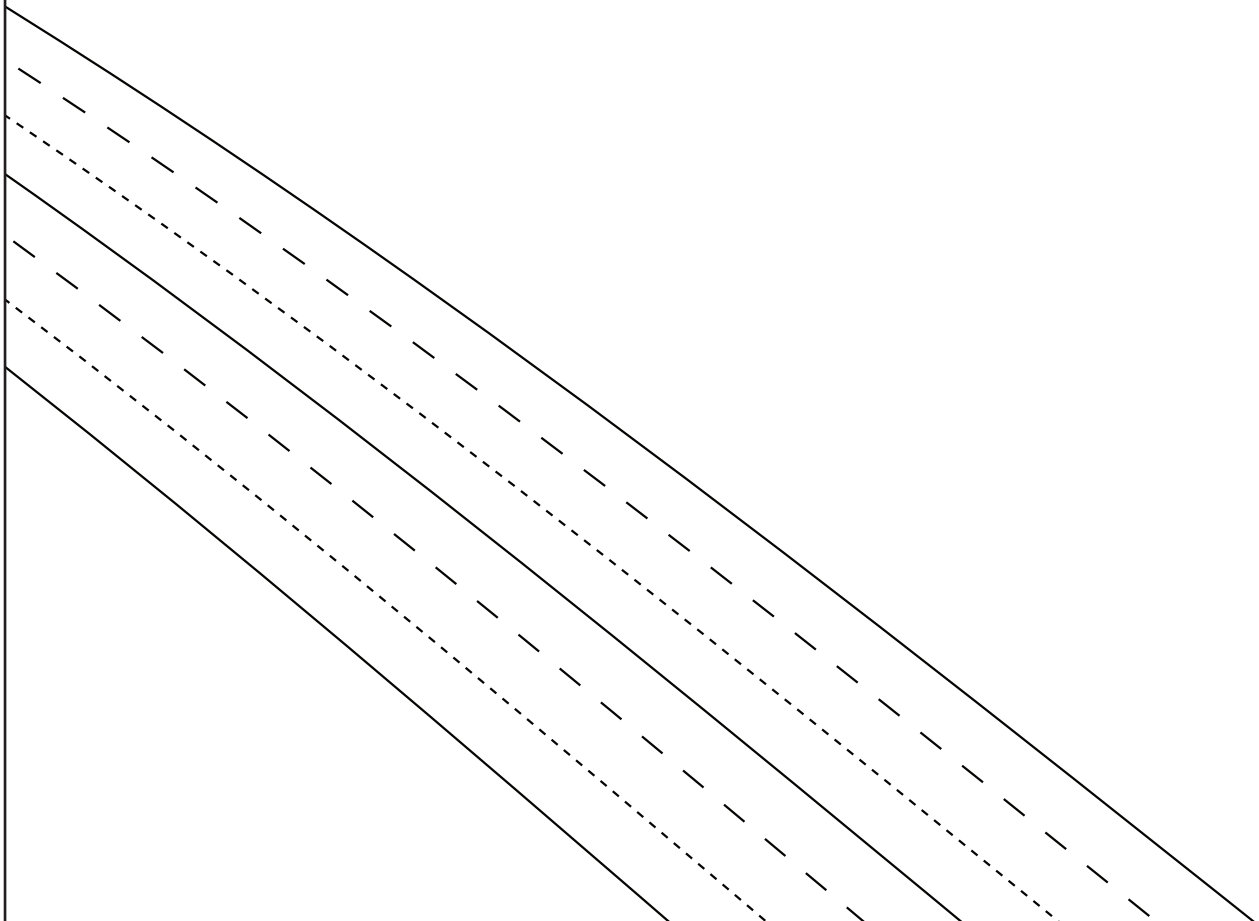


3

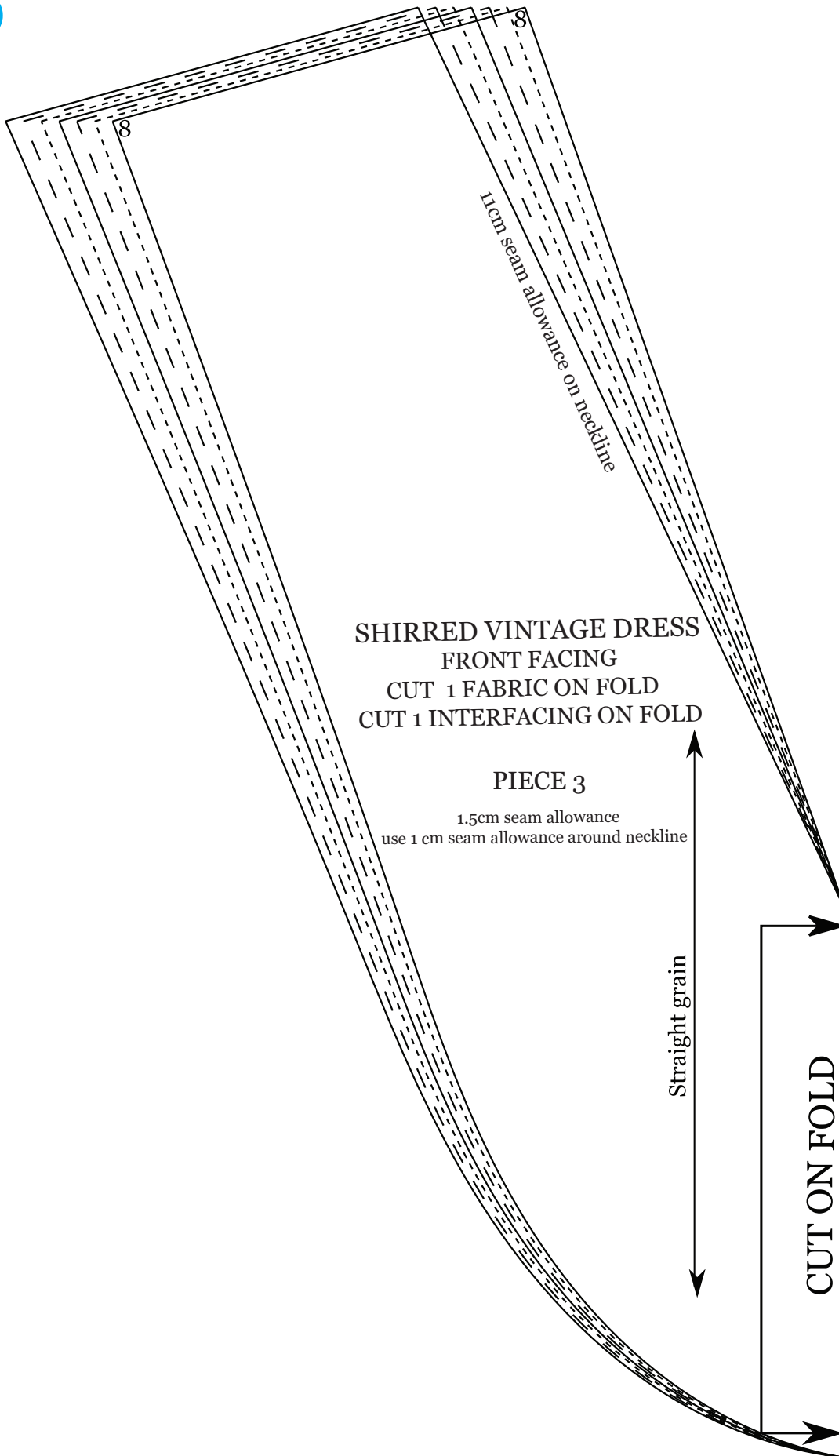


use a 0.5CM HEM

4



5



SHIRRED VINTAGE DRESS  
FRONT FACING  
CUT 1 FABRIC ON FOLD  
CUT 1 INTERFACING ON FOLD

PIECE 3

1.5cm seam allowance  
use 1 cm seam allowance around neckline

Straight grain

CUT ON FOLD

6



Straight grain



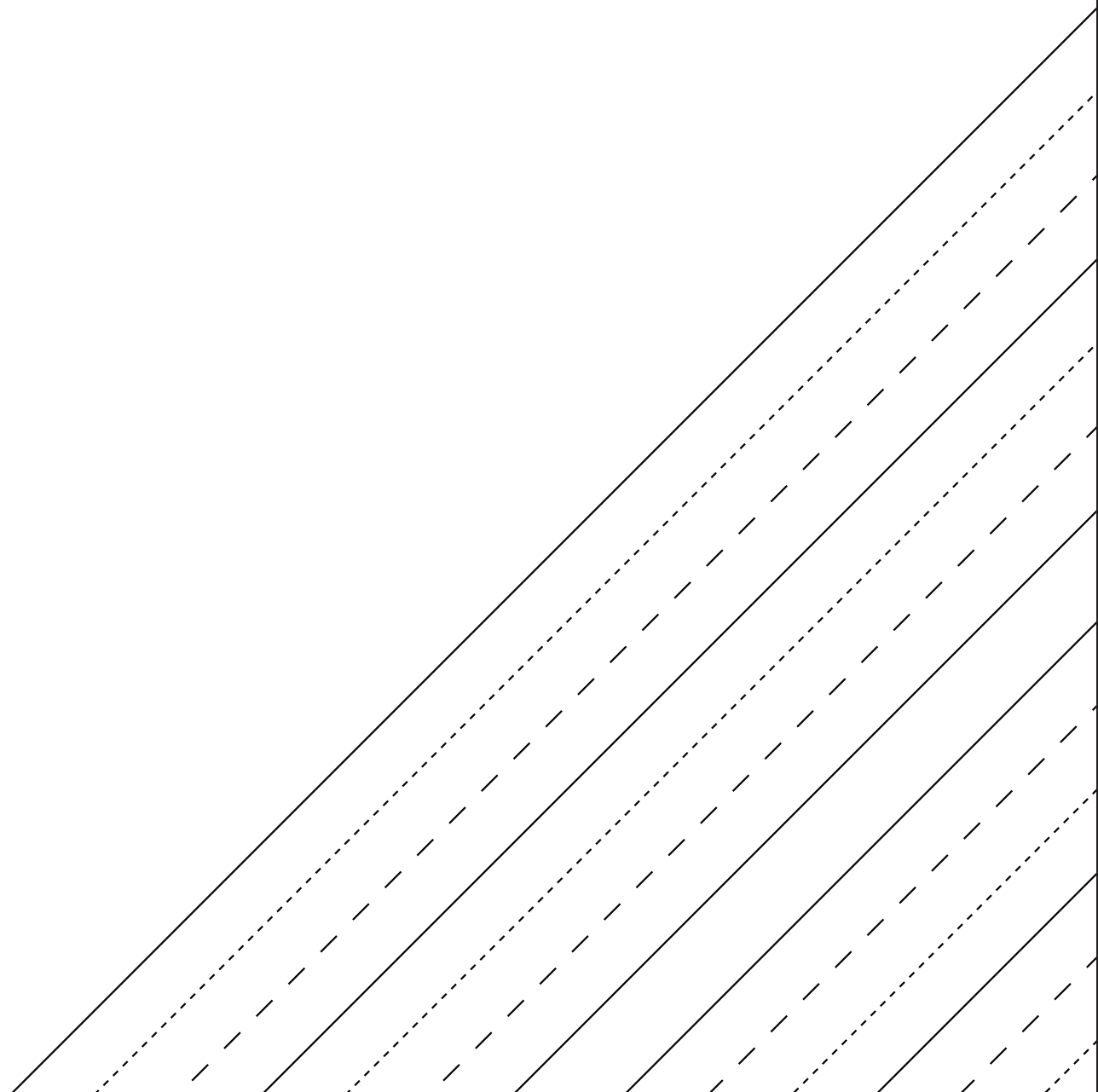


1.5 cm seam allowance included  
use 1 cm seam allowance on waistline

PIECE 6

SHIRRED VINTAGE DRESS  
BACK SKIRT  
CUT 1 PAIR FABRIC





9

8

10

12

14

16

18

20



20

18

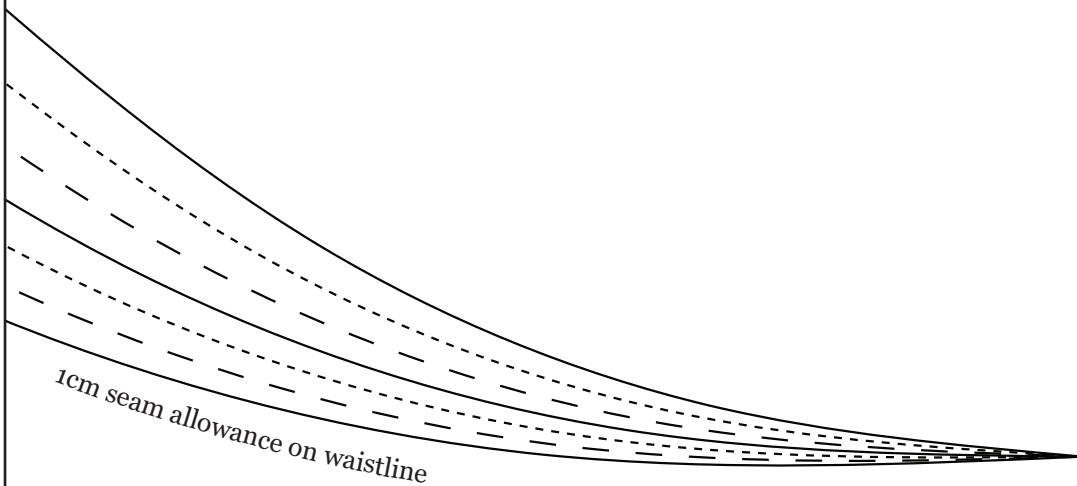
16

14

12

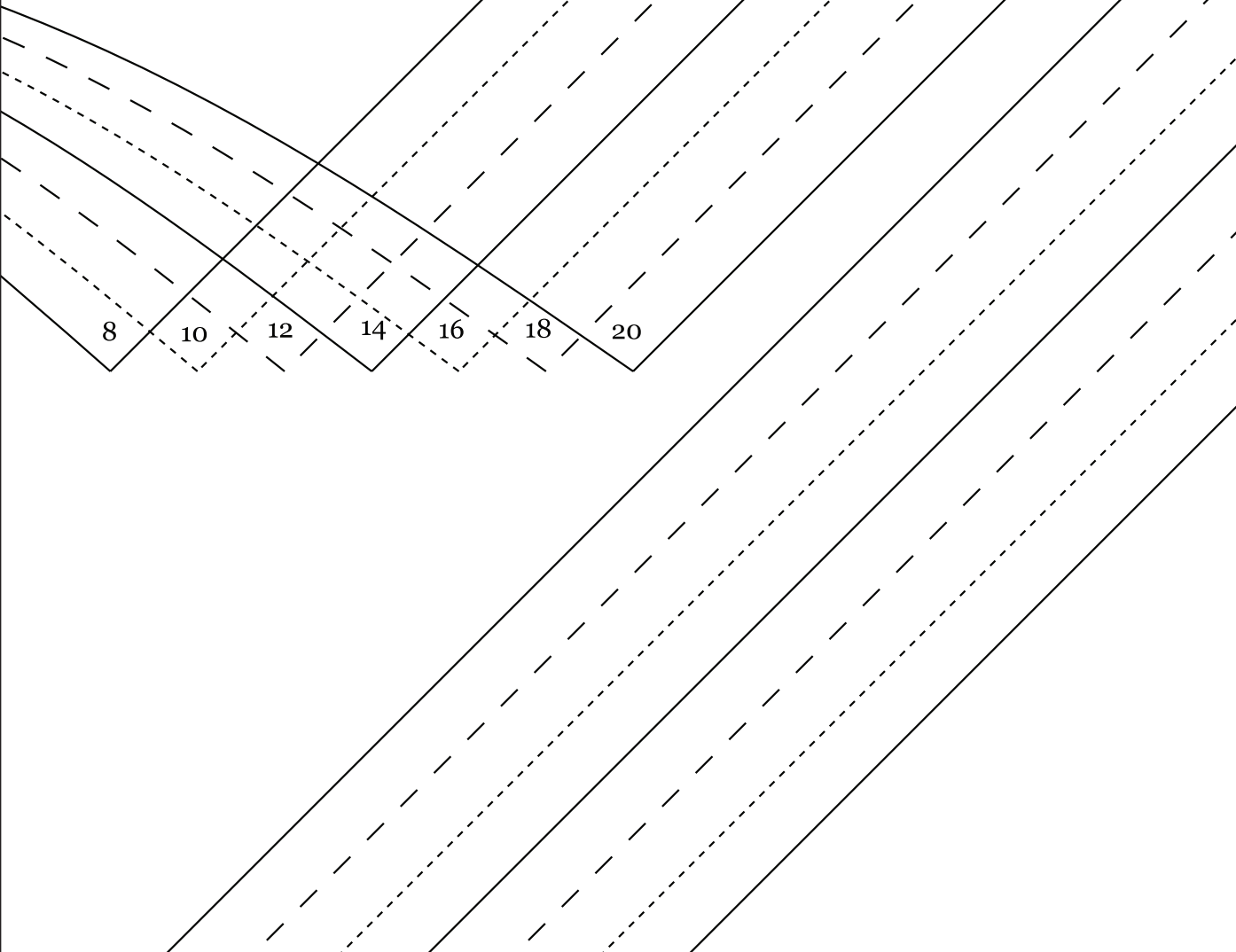
10

8





1cm seam allowance on waistline



13



SHIRRED VINTAGE DRESS  
FRONT SKIRT  
CUT 1 FABRIC ON FOLD

PIECE 5

1.5 cm seam allowance included  
use 1 cm seam allowance on waistline

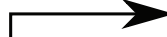


15

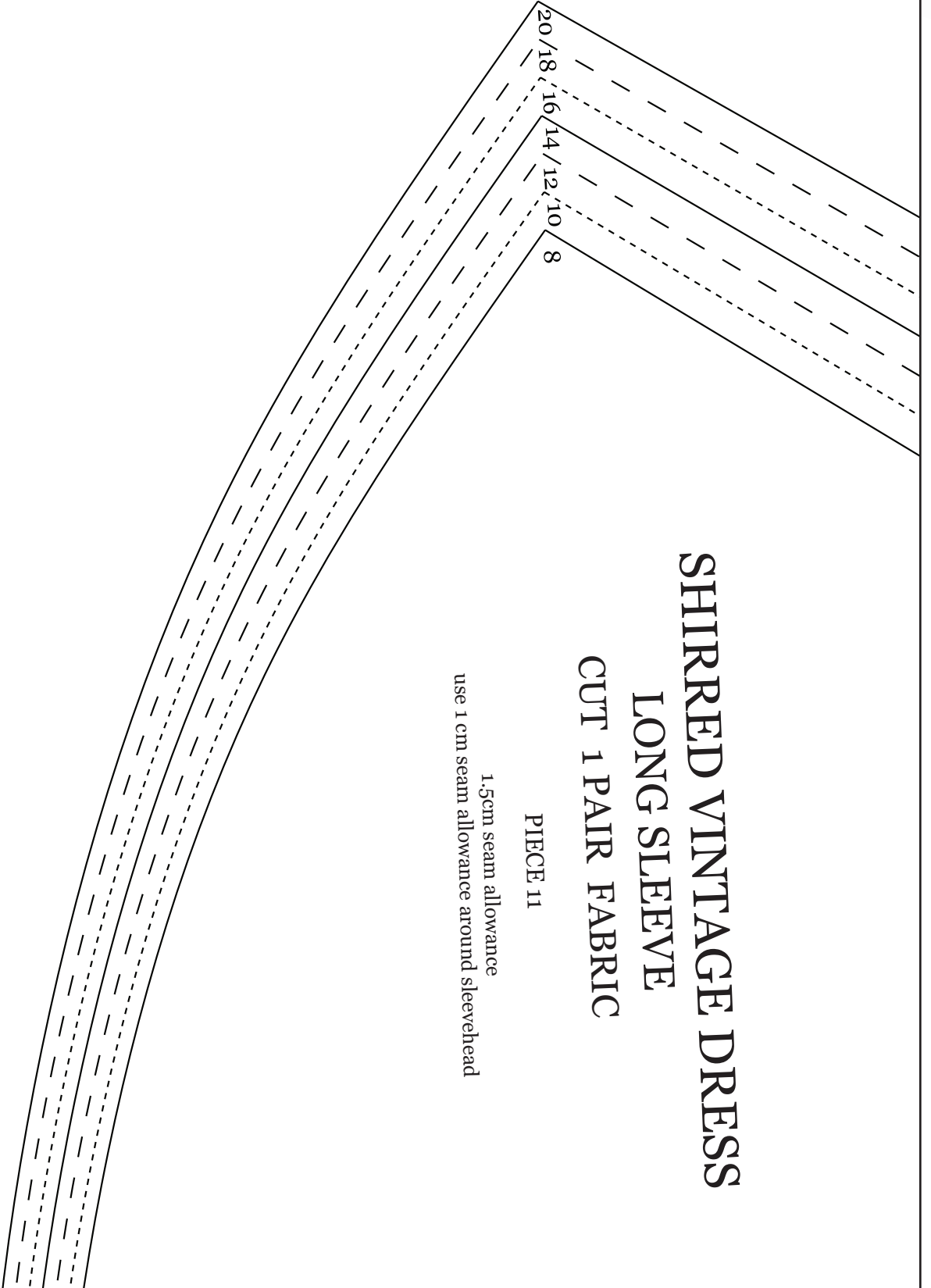
Straight grain



CUT ONE FABRIC ON FOLD







**SHIRRED VINTAGE DRESS**

**LONG SLEEVE**

**CUT 1 PAIR FABRIC**

**PIECE 11**

1.5cm seam allowance  
use 1 cm seam allowance around sleevehead

17

20

18

16

14

12

10

8

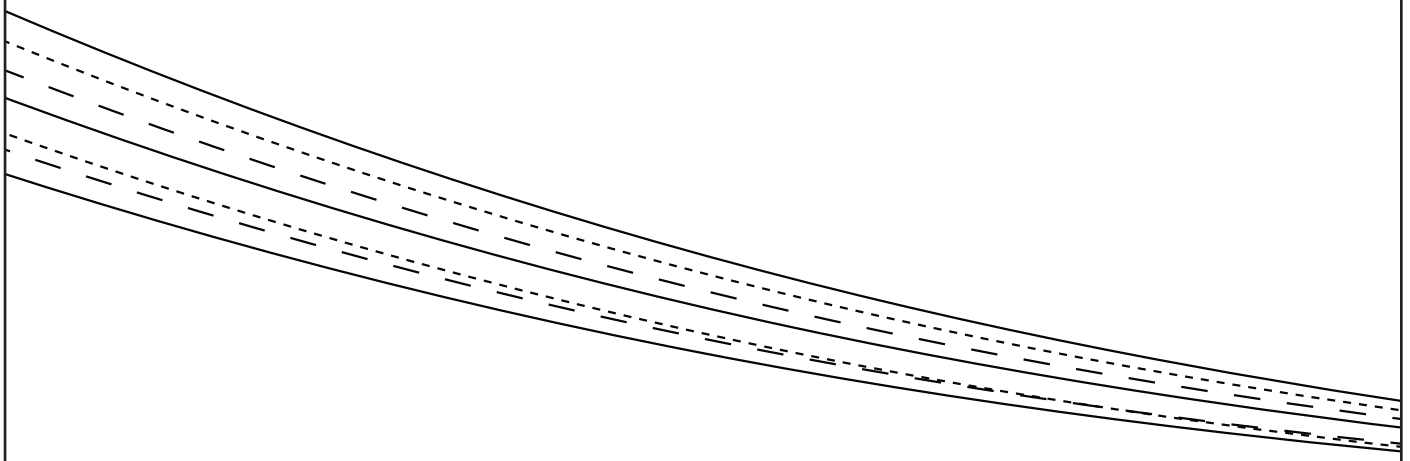


20  
18  
16  
14  
12  
10  
8

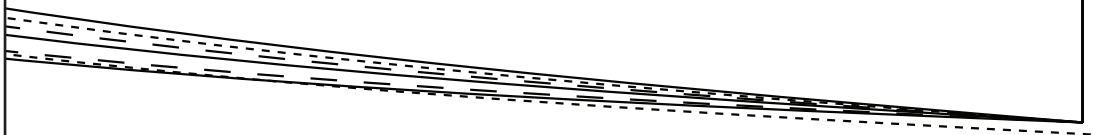
BACK

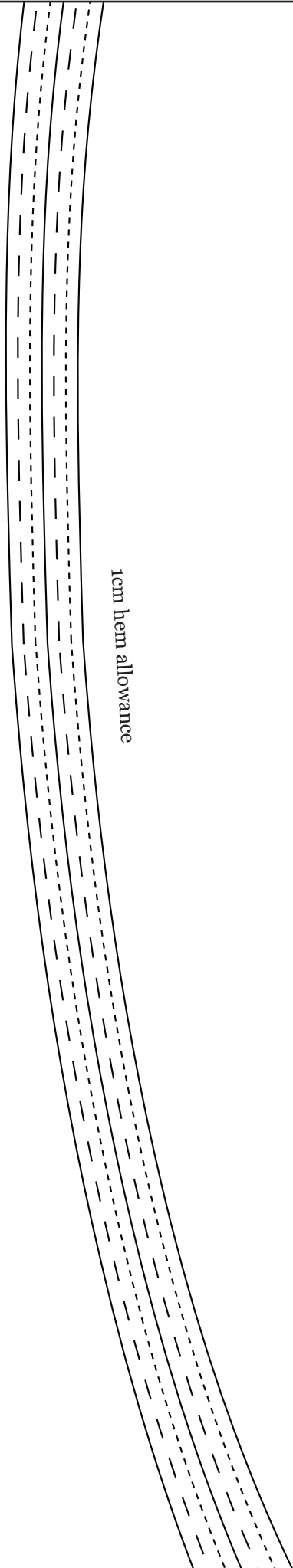


*use a 0.5CM HEM*



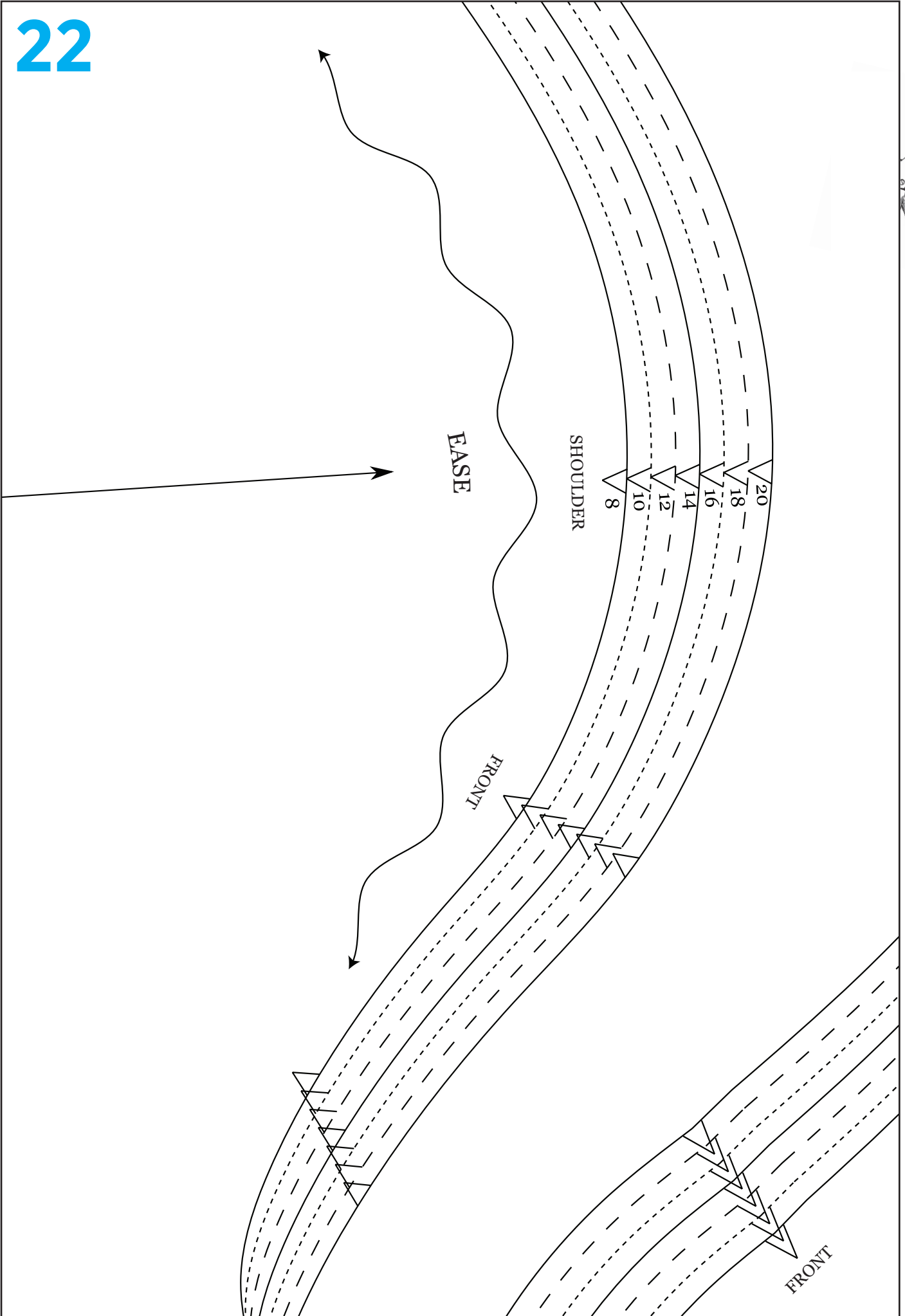
20

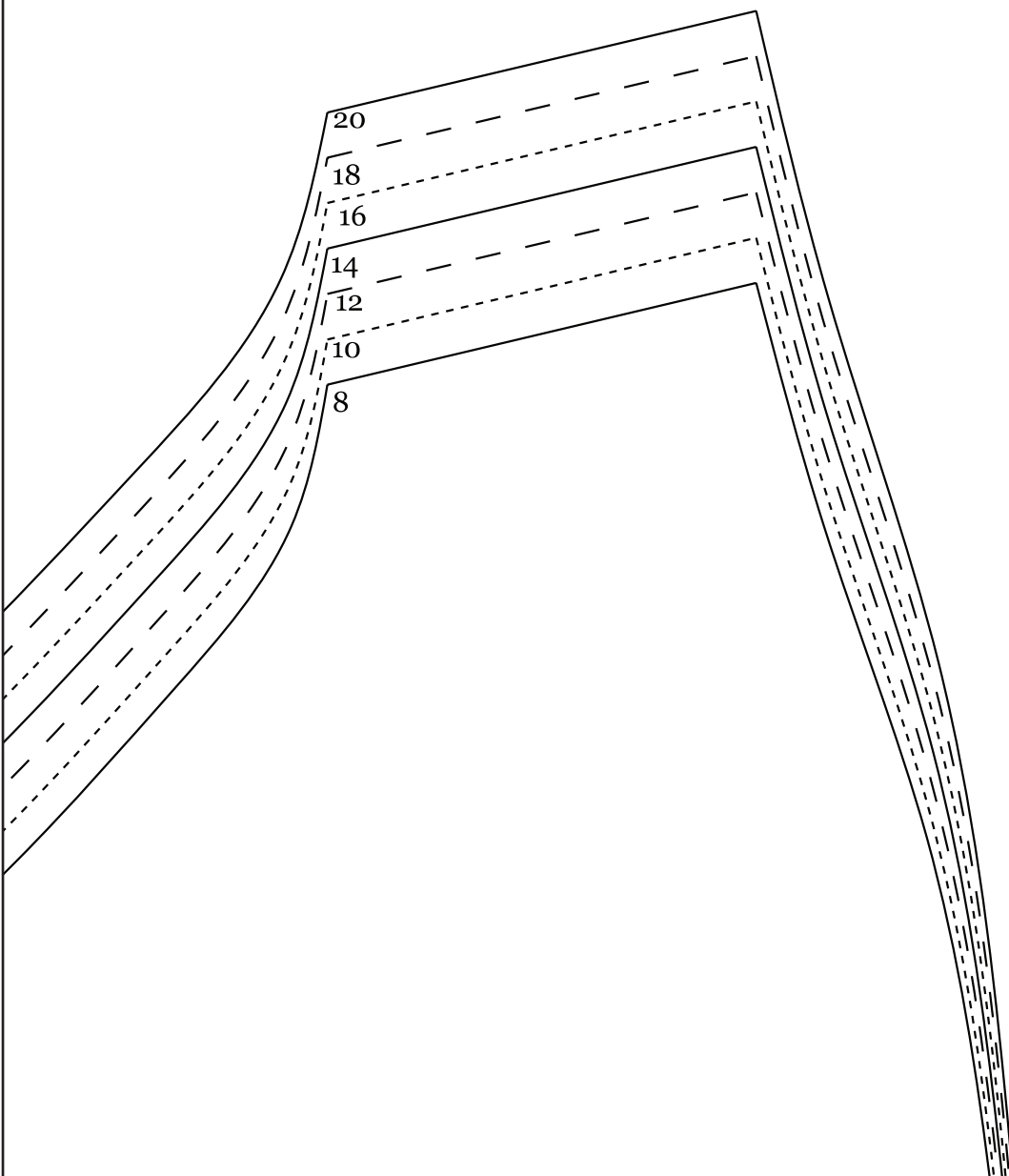




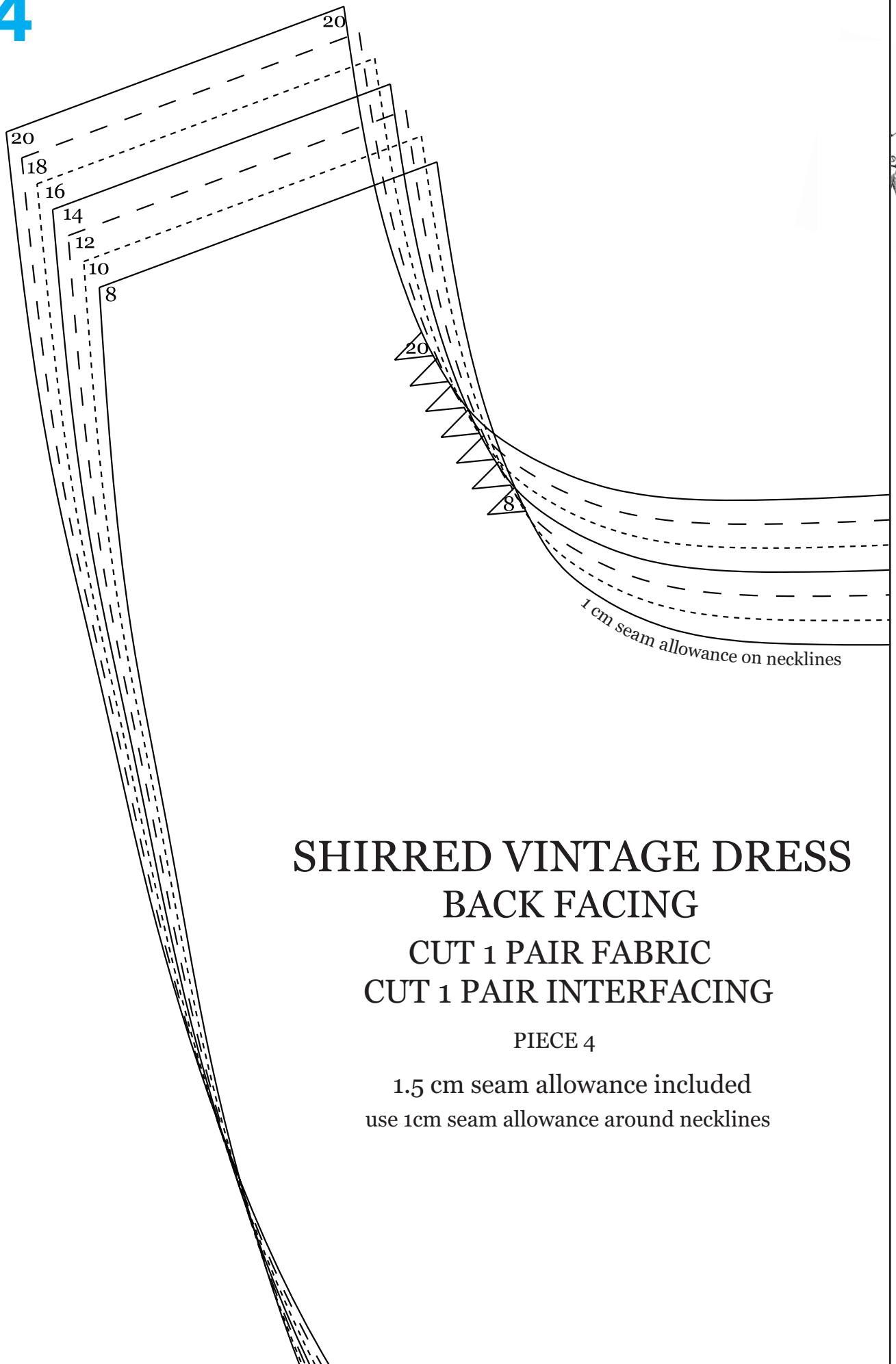
← Straight grain











# SHIRRED VINTAGE DRESS BACK FACING

CUT 1 PAIR FABRIC  
CUT 1 PAIR INTERFACING

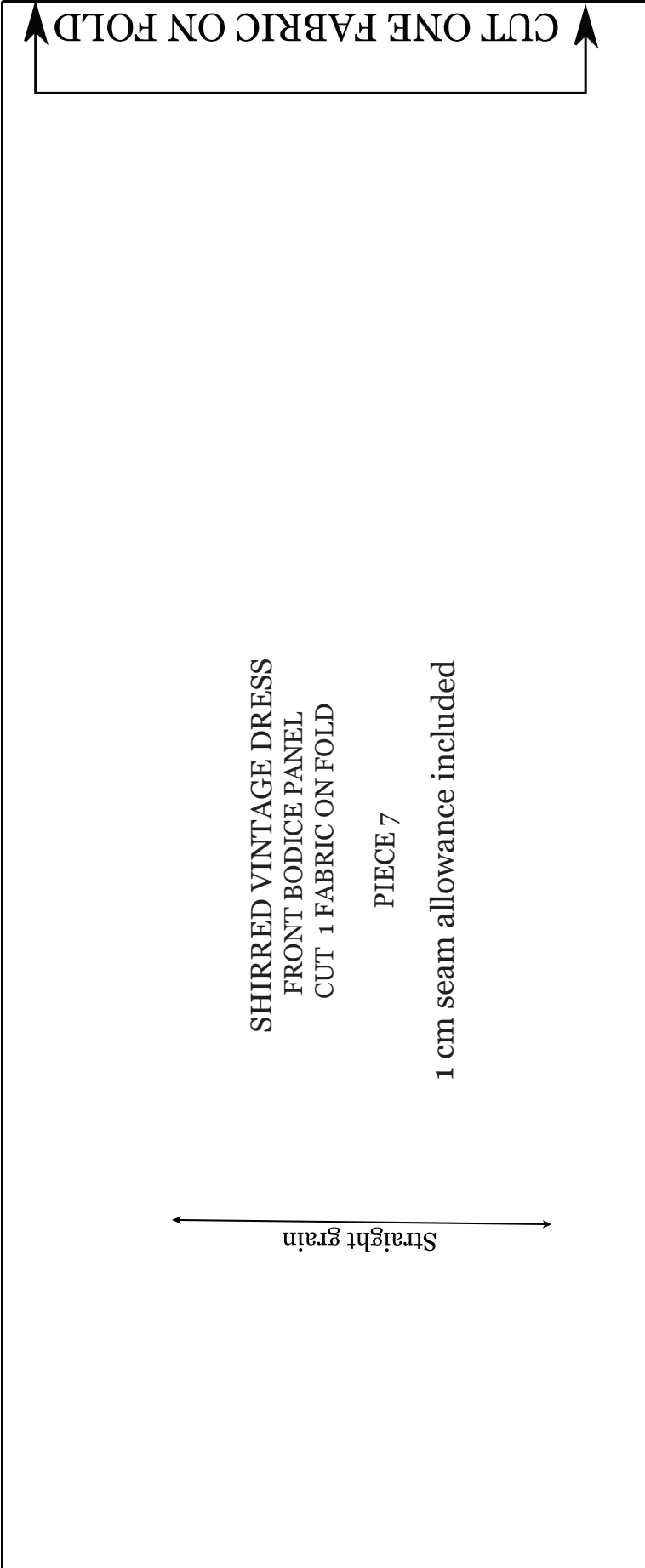
PIECE 4

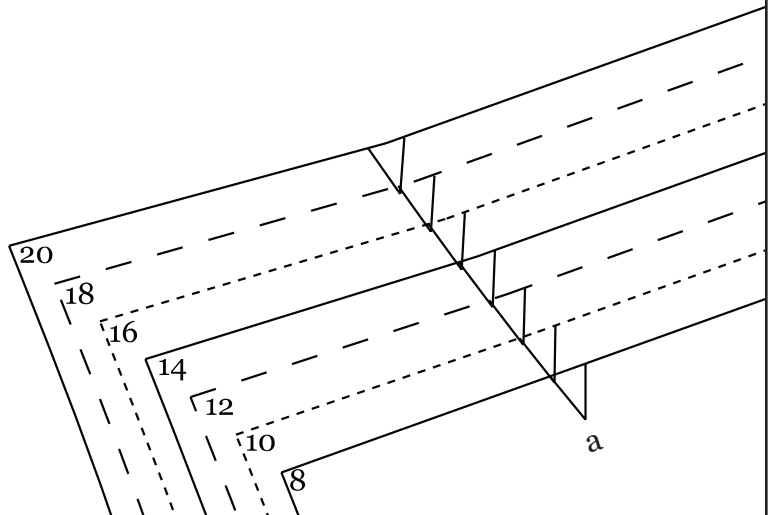
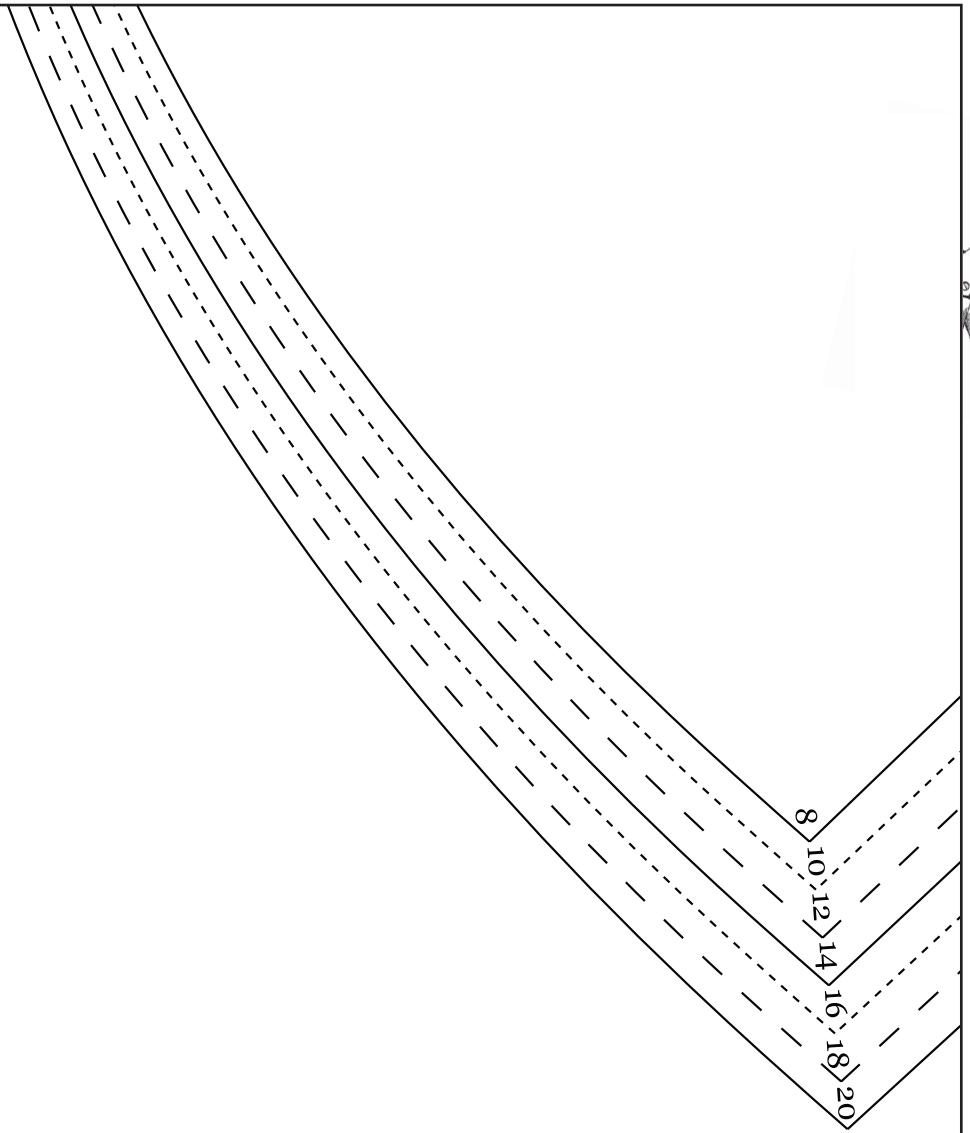
1.5 cm seam allowance included  
use 1cm seam allowance around necklines

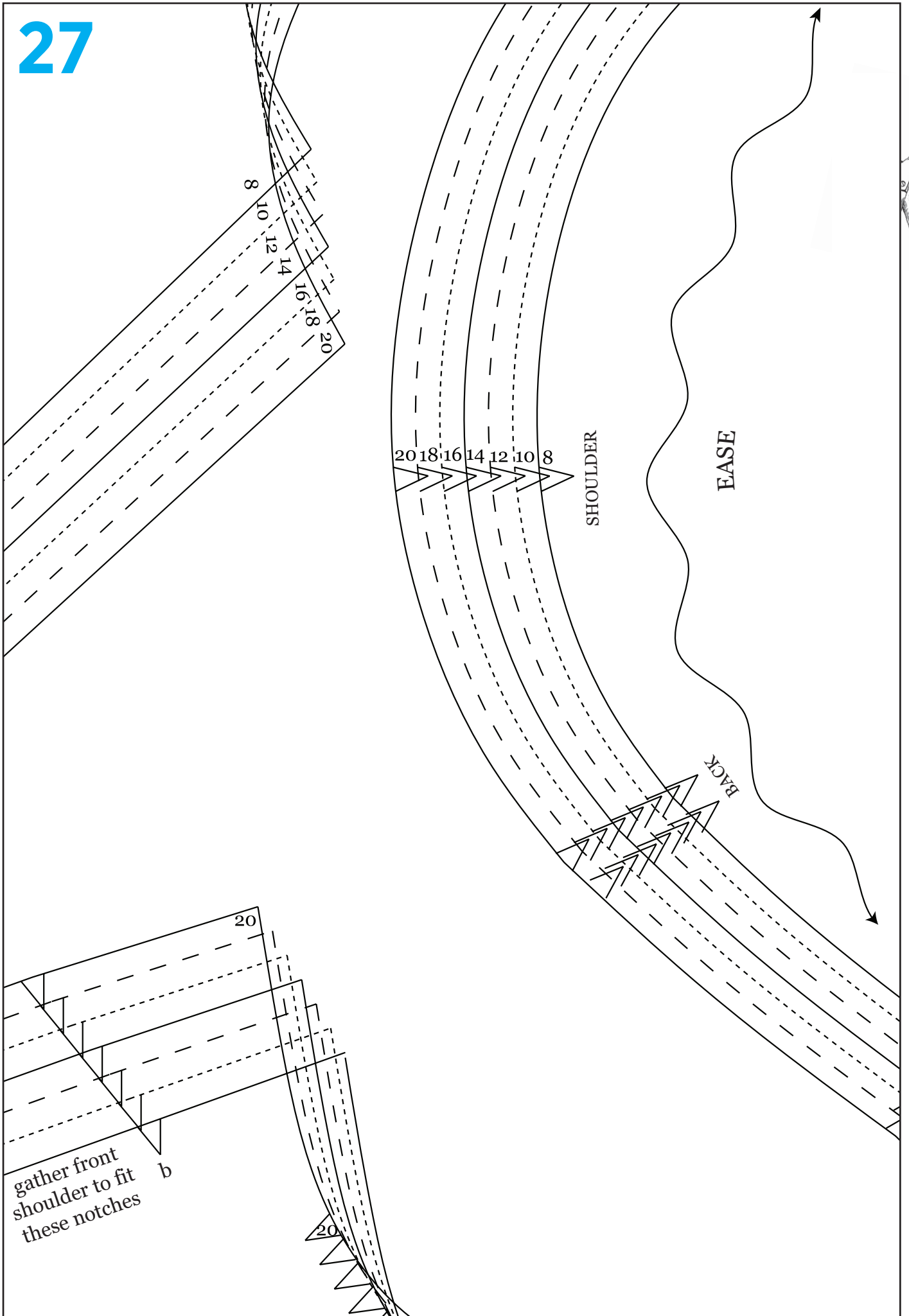


— —	20
— —	18
- - - -	16
— —	14
— —	12
- - - -	10
	8

Straight grain







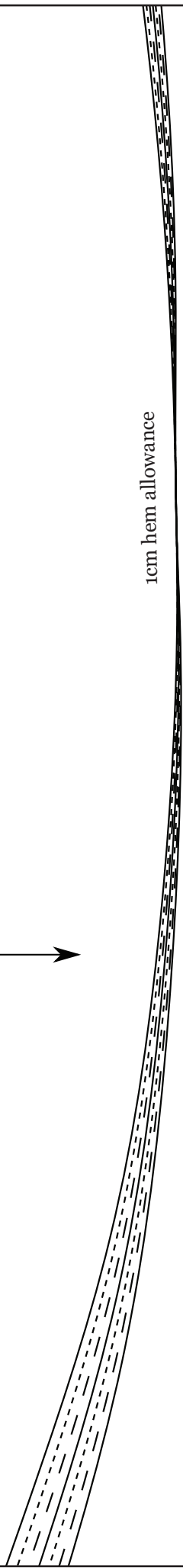
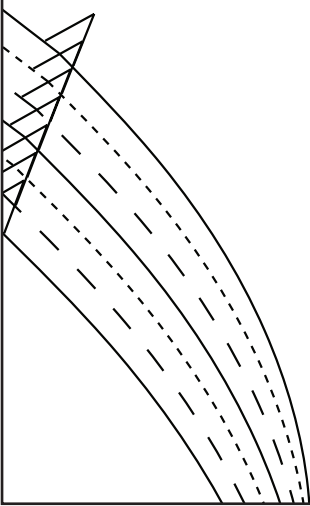
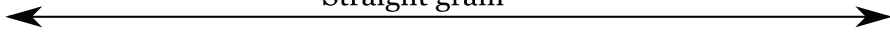
SHIRRED VINTAGE DRESS  
SHORT SLEEVE  
CUT 1 PAIR FABRIC

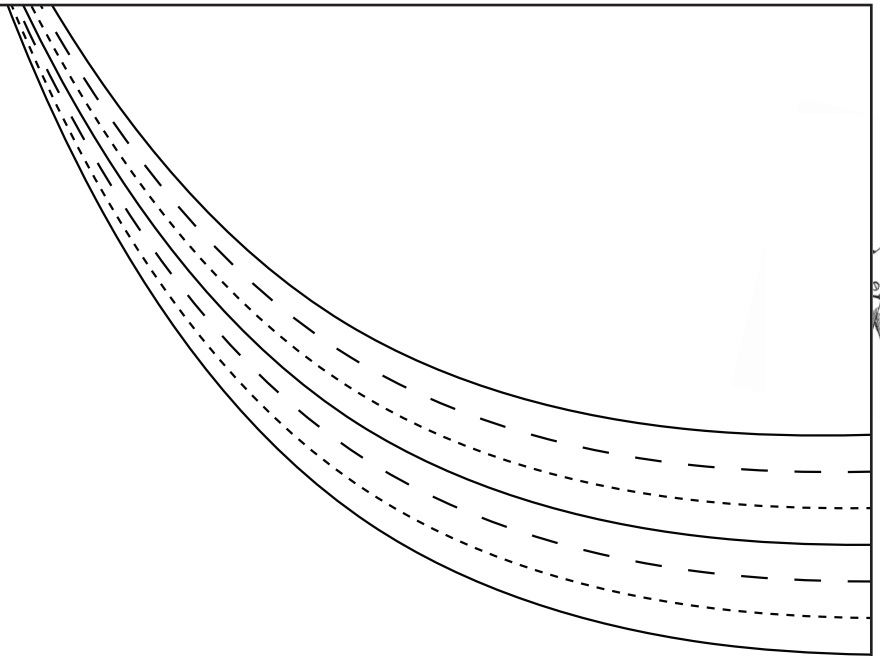
PIECE 8

1.5cm seam allowance  
use 1 cm seam allowance around sleevehead

1cm hem allowance

Straight grain





30



20

18

16

14

12

10

8

8 rows of shirring

8



10



12



14



16

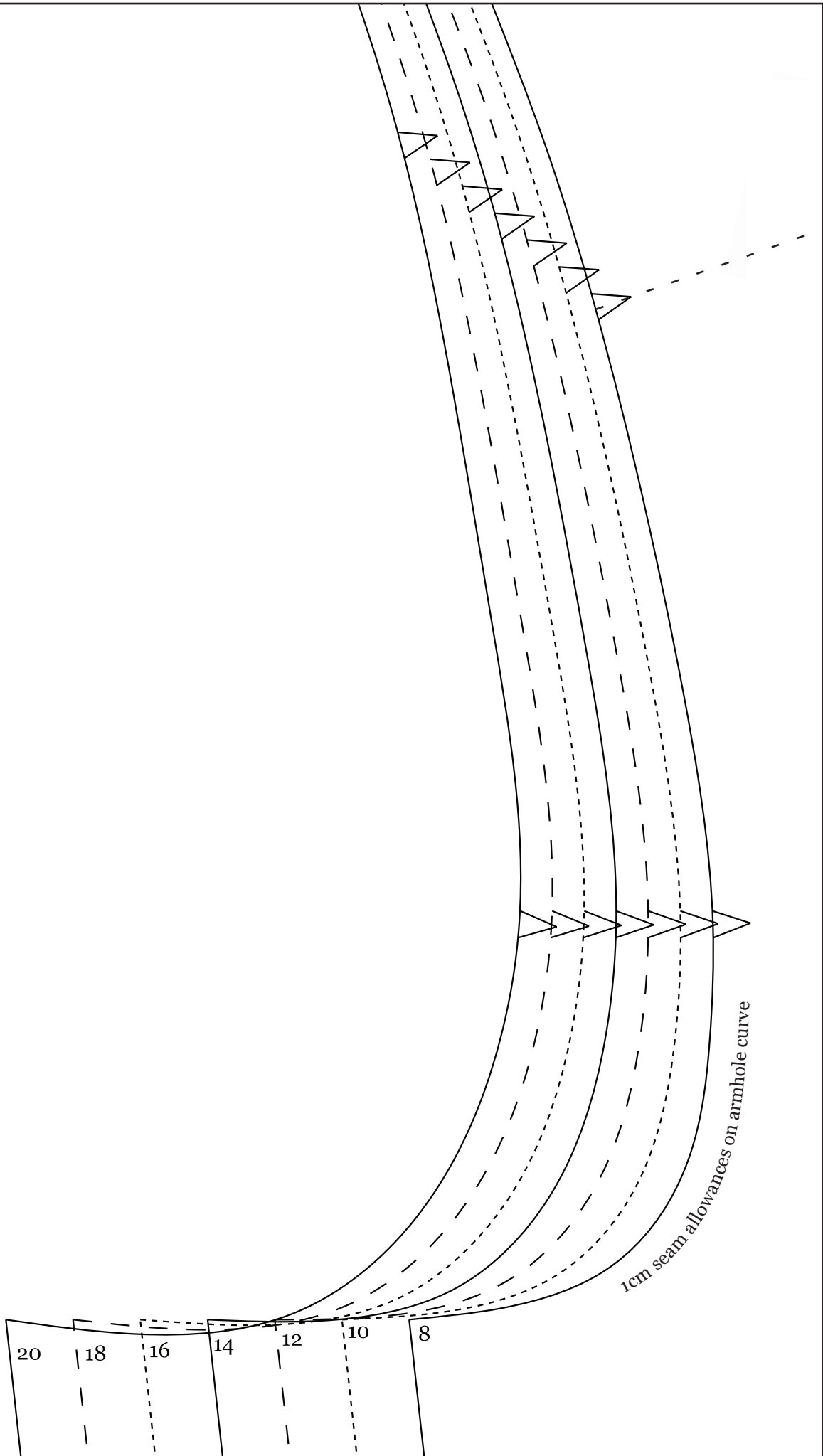


18



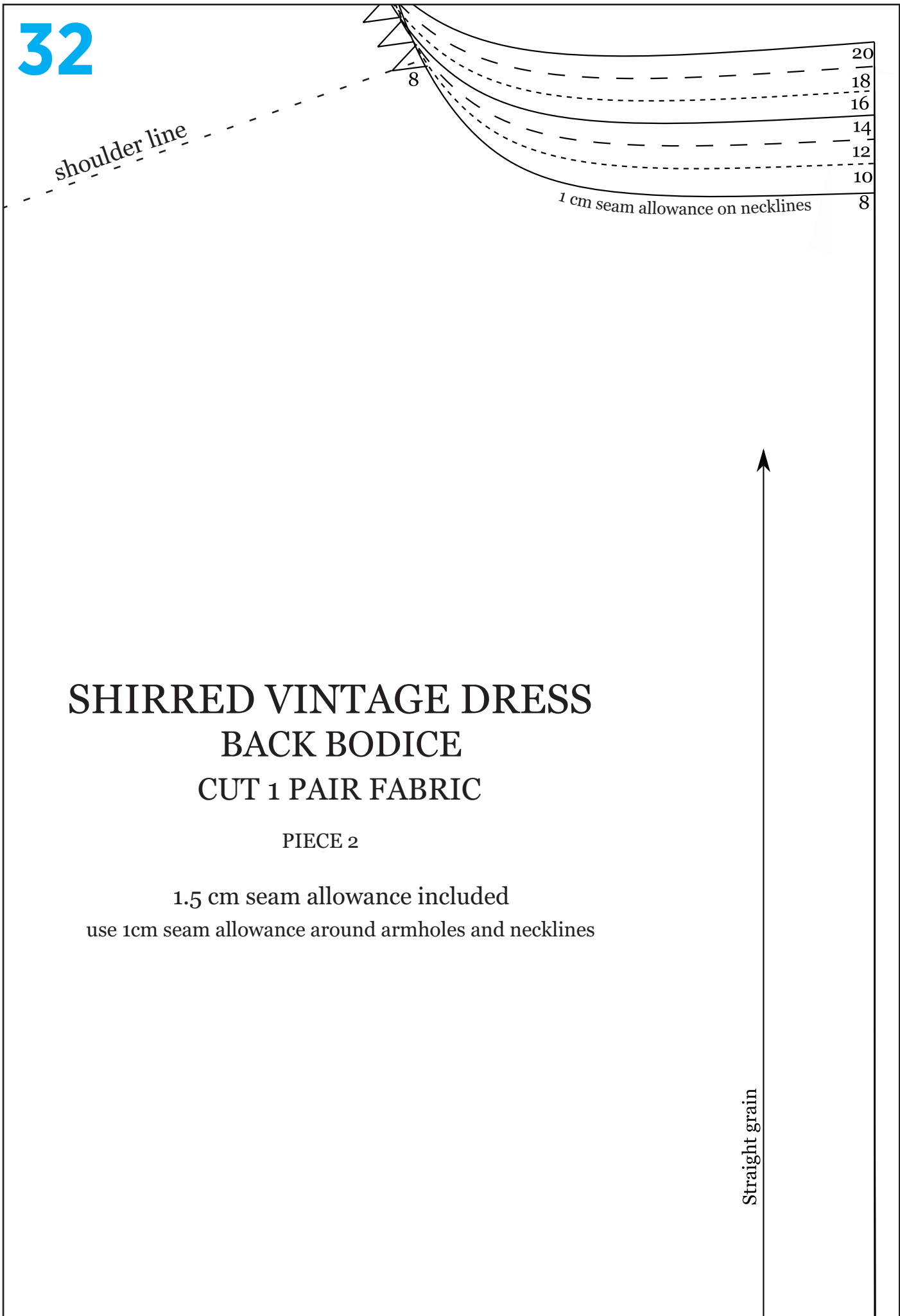
20







32

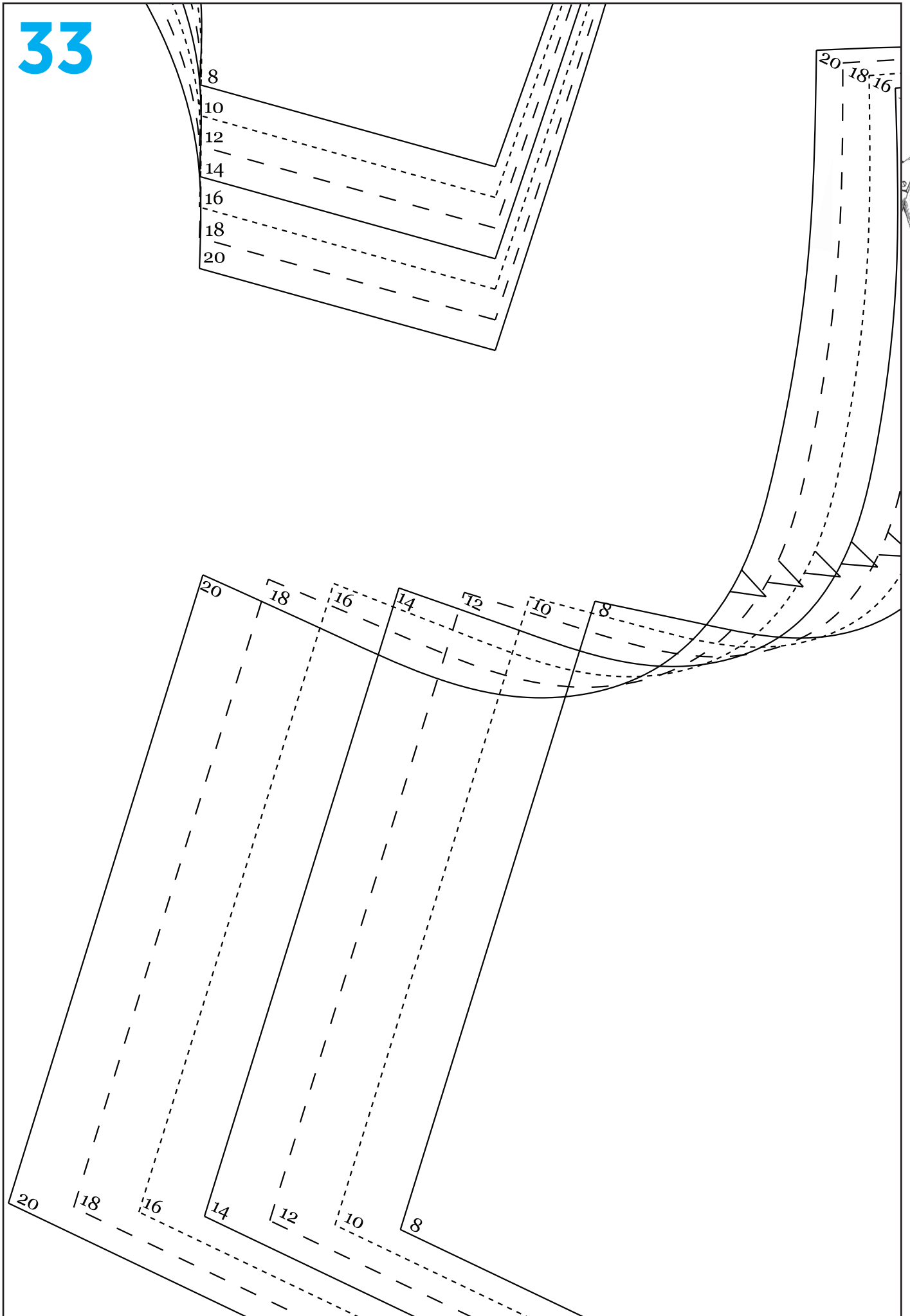


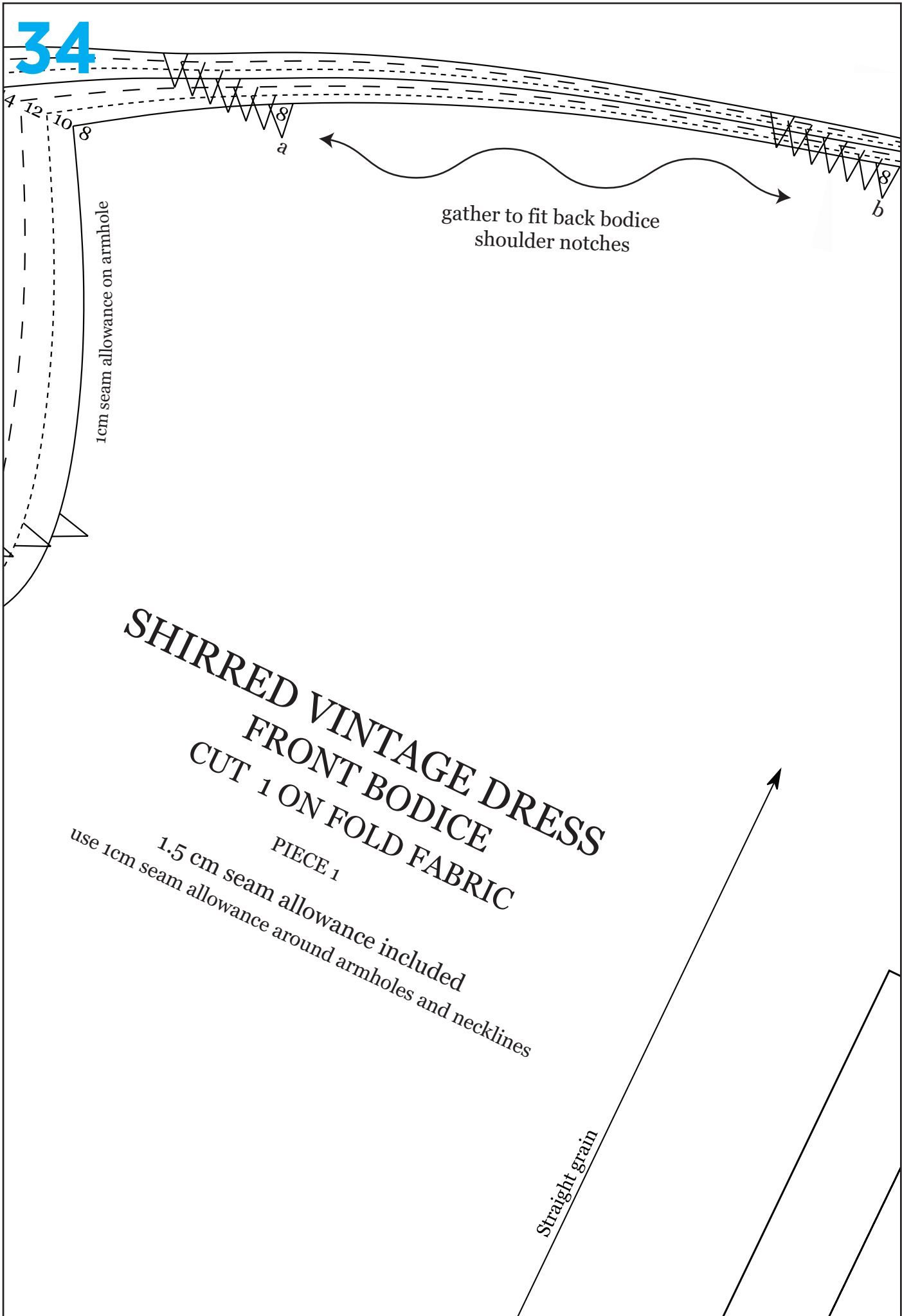
# SHIRRED VINTAGE DRESS BACK BODICE CUT 1 PAIR FABRIC

PIECE 2

1.5 cm seam allowance included  
use 1cm seam allowance around armholes and necklines

Straight grain





1cm seam allowance on armhole

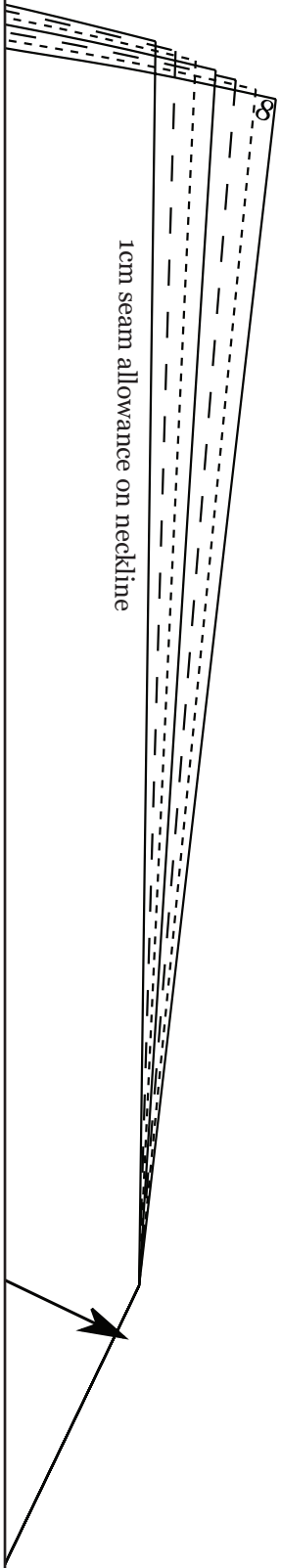
gather to fit back bodice shoulder notches

**SHIRRED VINTAGE DRESS  
FRONT BODICE  
CUT 1 ON FOLD FABRIC**

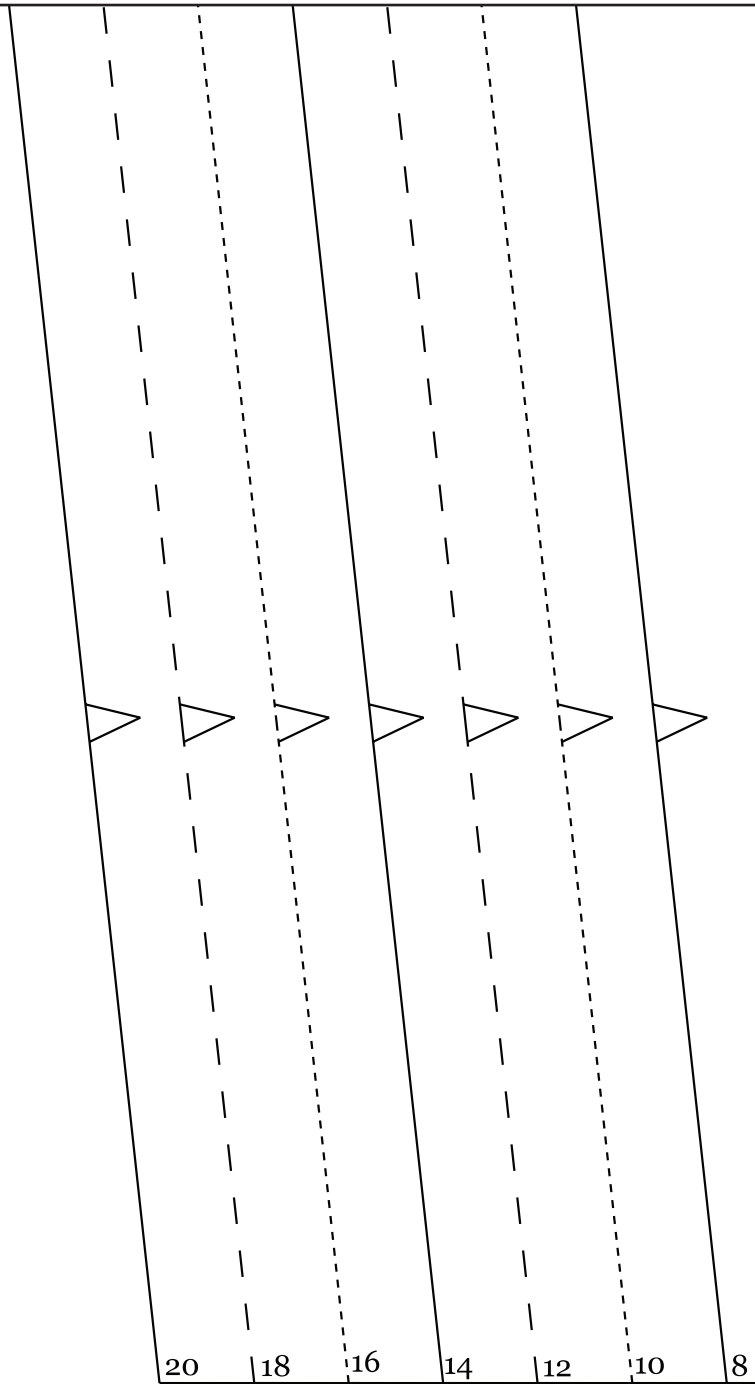
PIECE 1

1.5 cm seam allowance included  
use 1cm seam allowance around armholes and necklines

Straight grain



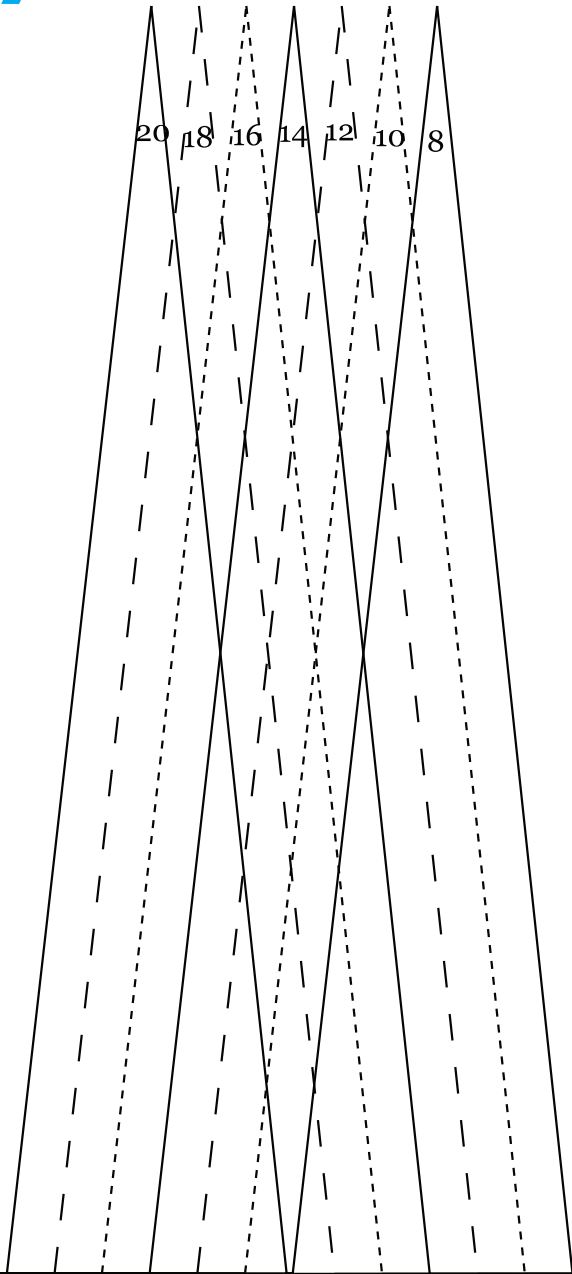
36



20 | 18 | 16 | 14 | 12 | 10 | 8

1 cm seam allowance

37



1 cm seam allowance



39

